



G

GILLESPIES

CREATIVE DESIGN FOR MASTERPLANNING,
LANDSCAPES AND URBAN SPACES
完善整体的规划, 景观和城市设计

CAPABILITY BROCHURE 能力手册

MARCH 2017
2017年3月



CONTENTS 目录

PRACTICE PROFILE 公司简介	5
CAPABILITIES AND EXPERTISE 能力与专业知识	6
EXPERIENCE 经验	12
OUR TEAM 我们的团队	120
SHOWCASE PROJECTS 项目展示	124



PRACTICE PROFILE

公司简介

Gillespies 是一家具有国际影响力和丰富项目经验的景观与城市设计公司。项目范围从总体规划到大型城市及社区园林景观设计 ---- 我们的优秀团队提供全方位的专业服务。自公司成立以来的50年里, Gillespies在不同行业的客户中建立起一个稳定的声誉。已建项目遍布全球, 其中包括英国的所有主要城市, 以及欧洲、中东、中国、东南亚地区和澳大利亚。

我们设计的项目也获得过无数来自世界各地的奖项, 这是对我们专业技能的肯定。我们一贯专注于听取甲方的需求与愿望, 并致力于为项目带来新颖的想法和方向。我们重视质量标准同时关注可持续发展与复兴。每项设计不但只成为未来的遗赠, 并且要与现有的社会, 经济, 文化等环境融为一体。

COMPANY PROFILE

Gillespies is an experienced and acclaimed international landscape and urban design firm. From masterplanning, to landscape and urban design for major developments and communities—our experienced team offers a complete service. Since its inception 50 years ago, Gillespies and has built a solid reputation for delivering inspired design in a wide range of sectors. Finished projects are located in every major UK city, in West and East Europe, the Middle East, China, South-East Asia and Australia.

Our expertise has been recognised by numerous design awards throughout the world. We bring fresh ideas to each commission, consistent with clients' individual needs and aspirations. Quality standards are integral to our practice, as are principles of sustainability and regeneration. Every design creates a legacy for the future and we work in harmony with local social, economic and cultural environments.

CAPABILITIES AND EXPERTISE 能力与专业知识

Gillespies 在中国

Gillespies受委托参与了许多著名的国际项目。我们与一些知名开发商合作。在中国，到目前为止我们在北京, 香港, 上海, 苏州, 重庆, 海南, 无锡, 南京, 大连, 涿洲, 长峙岛(宁波)等地都做过项目。

公司理念

Gillespies 以全球化思考并且实践于当地，回应甲方、及所有责任人的意见并听取公众的看法，但最主要的，还是着重思考所在地本身的价值。我们的理念是设计要反映当地固有的特质, 创造真正能够与所在环境融合的，启发式的和充满生气的空间。

可持续性设计

可持续性以及相关环境类话题是Gillespies思考项目时从概念设计到施工都不可或缺的部分。公司坚持高质量的环境准则。Gillespies也在BREEAM, LEED 及Estidama等相关可持续设计评价标准中有广泛的项目经验。部分项目也曾在这些评价体系下获奖。

员工

Gillespies共有8位董事, 14位副董与总监, 及大致100位员工。

GILLESPIES IN CHINA

Gillespies works internationally across global regions on the highest profile and most prestigious schemes available to our profession. We work for the most well-known and respected development firms and are currently, or have very recently, worked on projects in Hong Kong, Shanghai, Changzhi Island, Suzhou, Chongqing, Hainan, Wuxi, Beijing, Tian Tiai, Qidong, Liubu, Dong Tai Hu, Diashan, Nanjing, Laizhou, Dailan, Tonggji and Zhongji.

PRACTICE PHILOSOPHY AND APPROACH

Gillespies thinks globally and practices locally, responding to clients, stakeholders and the community, but above all, place. The practice ethos is to work with the defining characteristics and inherited qualities of each place to create inspirational, vibrant spaces that integrate and invigorate their surroundings.

SUSTAINABLE DESIGN

Sustainability and environmentally-sensitive design is incorporated into the concepts and construction of Gillespies projects. The practice also maintains high environmental standards in its own business. Gillespies has extensive experience working in the context of BREEAM, LEED and Estidama Guidance. Some of our projects have been awarded the highest levels of environmental accreditation.

STAFF RESOURCES

Gillespies comprises eight partners, fourteen associate partners and associates and around 100 staff.

使用者体验的重要性

我们相信创造一个吸引人的, 受欢迎的环境的根本要素是基于对地方本身的使用体验与真实感受, 让人们得以像享受室内舒适空间一样享受室外景观与公众环境。我们意识到对不同文化与国家的理解和感受是创造独特的空间与体验的关键因素所在。

无论市场如何变迁，彻底的理解使用者对设计对象的认可是项目成功的关键，每个使用者群体有不同的空间使用体验和使用需求。这些使用者群体包含有老人、小孩的家庭等。所有使用者群体所共通的需求就是要找寻有意义的、相关的、丰富的空间体验。

考虑不同类型的设计对象也为创造独特性提供了一个机会，譬如去光顾一个购物中心或在一个城市酒店逗留提供不同的体验。

环境因素，包括项目所在地的地理、气候特征等，在规划和布局安排中起到重要的主导性角色，同时也依次影响了当地的外貌特征的独特性。在设计进程中懂得利用这些知识也有利于这一独特性的铸造。

新景观，作为项目的一部分，可以用于加强该场地的特点。同时也具有一些普遍性，譬如利用丰富的植物、水景、灯光和公众艺术等元素，用于吸引参观者并提供愉悦的感官体验。

景观本身亦是不断变化的元素，它提供了多种经验的对比，从白天到黑夜，以及经历着一年内季节的变迁。

综上所述，我们相信，景观被当作一个动态变化的设计元素，极大地贡献给人们高质量的、多层次的体验，同时不失与客户的品牌宣传相辉映。

RECOGNITION OF THE IMPORTANCE OF VISITOR EXPERIENCE

We believe that it is essential to create inviting, welcoming and attractive places that feature experiences based on the occupation and enjoyment of landscape and public realm as much as indoors. We realise that awareness and responsiveness to cultural differences in different countries and regions is a key factor in creating distinctive destinations, and shaping differentiated experiences.

Whether in the context of luxury or mass market, a thorough understanding of the target audience that a destination is appealing to is crucial to its success since each user group is in search of particular experiences and has its own needs. Groups include families with children, seniors, etc. What all groups share is a search for meaningful, relevant and enriching experiences.

The combination of place and type of destination being considered offers opportunity to create uniqueness based on local identity whether this is in relation to a visit to a shopping centre or a stay at a city hotel.

Environmental factors, including tWWhe geography and climate in which a project resides, play a big role in determining the planning and layout of a destination and this in turn contributes to its distinctive character and appeal. The harnessing of this knowledge in a design process will help forge desirable distinctiveness in destinations.

New landscape, as part of developments, can be employed to reinforce individual character and identity. It also offers additional, more generic qualities that contribute positively to visitor enjoyment based on sensory experience of a range of elements such as rich plantings, water, lighting and art.

Landscape is a dynamic element too and offers a variety of contrasting experiences during the day and in the evening and via seasonal changes through the year.

In summary we believe that landscape, used as a dynamic design element, can contribute strongly to high quality and multi layered experiences for people and that this reflects strongly on a Client's brand.

Gillespies；创造 ‘目的地’

在Gillespies，需要设计师透彻理解、发掘每一个项目自身的特质并加以精雕细琢。我们的核心宗旨反映在对待每一个项目上。不论是总体规划还是局部设计，都在挑战一成不变的模式。我们试图用“量身定制”的方式，为每一位客户找寻项目独特的设计方案。

我们相信理解最终使用者和设计符合他们使用的需要应该先于形式设计。我们提倡一丝不苟的方案总图设计过程，强调设计讨论的重要性，斟酌既定目标，争取每一个项目在整体的景观和建筑上的和谐统一效果。我们寻求平衡设计的解决方案，具有良好美感的同时也注重理性及实用性，成功的实现项目最终的服务目的。基于这样的原则，使得Gillespies的设计方案适应原有的设计意图 — 实现甲方的目标、巩固长期投资同时也受益使用者。

我们的设计方式与我们的核心价值紧密联系

- 创造独特的空间体验，使使用者享受体验过程——不管他们属于哪一组人群。所有人的体验应该是舒适的、安全的以及难忘的，享受瞬间的欢乐与美妙。
- 我们的设计团队清楚明白，并用心感受设计对象，通过理解，变通和再造，创造独一无二的空间质量。
- 实现高质量的可持续发展设计是可靠的方式并要落到实处。

我们的目标是设计令人过目难忘的项目：

- 具有独特性
- 反映文化和周围环境
- 优雅的，经得起时间考验的
- 有逻辑的，合理的规划布局和道路流通
- 细致讲究的表现

联系到使用者的感官体验：

- 享受于其中而不是‘敬而远之’的
- 安全与舒适感
- 充足而富有感知的
- 美丽富有启发的
- 健康向上的
- 积极好奇有索取的
- 有体验并且难忘的
- 教育性，娱乐性
- 环境可持续性

GILLESPIES; CREATING DESTINATIONS

At Gillespies we recognise that every project has its own special agenda that needs to be clearly understood and needs careful handling by its designers. At the heart of our response in masterplanning and landscape design in this sector is a process which challenges accepted formulas and the “cookie cutter” approach, in search of a unique solution for each Client.

We believe that understanding the end user and the design of experiences to meet their needs should precede that of physical design. We promote a rigorous masterplanning process with a strong emphasis on design workshops to distil and agree specific and individual objectives, to be embedded in an integrated landscape and architectural vision for each project. We seek to achieve balanced design solutions that are not only of high aesthetic quality but are also highly functional and rational, successfully responding to operational servicing requirements. This understanding enables Gillespies to design schemes that are suited for their intended purpose - to meet client objectives, and to form the basis for long-term investment and enjoyment by users.

OUR DESIGN APPROACH IS LINKED TO OUR CORE VALUES

- The need to create exceptional guest experiences for people who journey to, and enjoy visitor destinations whatever their type. Experiences for all should be comfortable, safe and memorable, capturing moments of delight and wonder.
- Our designs stem from an understanding and an appreciation of place. It is through understanding, interpreting and revealing the unique qualities of each, that we can contribute a creative and distinctive offer.
- Achieving high standards in sustainability is a responsible approach and makes good sense.

Our aim is to design schemes that are memorable because of their:

- Distinctive identity and ambience
- Sensitivity to culture and context
- Elegant and timeless design character
- Legible and intuitive layout and circulation
- Meticulous detailing and managed appearance

This needs to be in the context of places for visitors that are:

- Immersive and a 'world away'
- Secure and Comfortable
- Opulent and Sensory
- Beautiful and Inspiring
- Healthy and Uplifting
- Engaging and Absorbing
- Experiential and Memorable
- Educational and Entertaining
- Environmentally Sustainable

WORLD WIDE EXPERIENCE

GILLESPIES 的项目经验遍及全球



AWARDS

真正的获奖设计单位

Gillespies有幸与各部门优秀团队合作海内外知名项目. 最近的获奖项目包括:

ALEXANDRA PALACE
2015 New London Architecture Award Unbuilt Public Buildings Winner

ALDGATE PUBLIC REALM AND HIGHWAYS CHANGE PROJECT, EC3
2015 New London Architecture Award: Transport and Infrastructure: Highly Commended

ANNE MEWS
2013 Sunday Times/British Homes Affordable Housing Development Award
2013 BCIA: The Prime Minister’s Better Public Building Shortlist
2011 British Construction Industry Award: Regeneration

BRADFORD CITY PARK
2013 RTPI Yorkshire’s Planning Excellence Award
2013 RICS Pro-Yorkshire Regeneration Award: Highly Commended Bradford’s City Park
2013 Urban Design Group: Best Project for the Public Sector
2012 British Construction Industry (BCI) Awards: Regeneration Award
2012 Association of Town and City Management (ATCM) Awards: Animating Public Space—Shortlisted
2012 LUX Urban Lighting Award
2012 Making a Difference in Yorkshire and Humber Awards

BRENT CIVIC CENTRE
2015 BREEAM Award: Winner, Mixed Use and Other Buildings Category
2015 RICS London Awards: Design through Innovation Award
2015 RICS London Awards: Regeneration Award—Highly Commended
2014 RIBA Regional Award
2014 RIBA Regional Award
2014 RIBA Regional Sustainability Award
2014 Civic Trust Award
2014 Building Magazine: Sustainable Project of the Year
2014 British Council for Offices (BCO): Corporate Workplace Award, London & South East
2014 British Construction Industry Awards: Sustainability Award Highly Commended

BUCHANAN STREET, GLASGOW
2007 Academy of Urbanism Awards: Great Street

COLLEGE COURT, UNIVERSITY OF LEICESTER
2014 RIBA East Midlands Awards for Conservation and Best Building

COVENTRY UNIVERSITY ENGINEERING AND COMPUTING CAMPUS
2014 Civic Trust Award: Commended

CROSSRAIL STATION ROOF GARDEN
2016 MIPIM—Best Urban Regeneration

GRAINGER TOWN REGENERATION, NEWCASTLE
2007 Academy of Urbanism Awards: Great Street
2007 Academy of Urbanism Awards: Great Neighbourhood

ISLE OF ANGLESEY, GWYNEDD AND SNOWDONIA NATIONAL PARK LANDSCAPE SENSITIVITY AND CAPACITY STUDY
2015 Landscape Institute Award—Strategic Landscape Planning

KATRINE WATER TREATMENT WORKS
2009 Institute of Civil Engineers Awards: Edmund Hambly Medal

KIDBROOKE MASTERPLAN
2013 Sunday Times British Homes Awards: Commendation for Best Landscaped Development

MAIDA HILL PLACE
2014 Landscape Institute Awards: Winner Adding Value Through Landscape

MASDAR INSTITUTE, ABU DHABI
2011 RIBA International Award
2011 British Expertise International Awards: Outstanding International Architecture Project

MEDIACITYUK
2013 BIFM Sustainability and Environmental Impact Award
2011 North West Regional Construction Award
2010 Salford Design Awards: Best Public Realm
2009 Royal Town Planning Institute (RTPI) Awards

MODERNIST HOUSE, HAMPSTEAD LANE
2011 RIBA Manser Medal Winner

MOSCOW EXPANSION MASTERPLAN
2013 Landscape Institute Awards: Highly Commended for Strategic Landscape Planning
2013 World Architecture News (WAN) Award: Longlisted

NATIONAL ASSEMBLY FOR WALES
2007 Civic Trust Award
2007 Chicago Athenaeum International Award
2006 RIBA National Award
2006 RIBA Stirling Prize Building of the Year Shortlist

NATIONALLY PROTECTED LANDSCAPES IN ENGLAND AND WALES
2015 Landscape Institute Award—Highly Commended in Landscape Policy and Research

NEO BANKSIDE
2015 RIBA Stirling Prize Shortlist
2015 RIBA National Awards
2015 World Architecture News Residential Award—Shortlisted
2013 British Association of Landscape Industries—Best Hard Landscaping
2013 British Association of Landscape Industries—Best Soft Landscaping
2013 Landscape Institute Awards: Best Landscape Design for Private Development
2012 New Homes and Gardens Awards: Gold for Best Communal Garden/Landscape and Gold for Best Landscaped Urban Development
2012 Constructing Excellence (London and the South East) Awards—Health and Safety Award Winner
2012 Best Landscape Architecture (London) and Best Architecture (UK): International Property Awards
2012 Best Large Development and Grand Prix Award: Evening Standard
2011 Best Development (London) and Best Development (UK): International Property Awards

NUMBER ONE RIVERSIDE
2014 BCO National Corporate Workplace
2014 BCO Best of the Best Award
2014 RIBA North West Awards for Conservation and Best Building

ONE HYDE PARK
2013 RIBA Award

PADDINGTON BASIN
2006 Street Design Award

PORT SUNLIGHT RIVER PARK
2016 RICS Award—Regeneration, Highly Commended

QUEEN ELIZABETH UNIVERSITY HOSPITAL
2016 MIPIM—Best Healthcare Development

SKY GARDEN
2015 BALI Award—Soft Landscaping Construction—over £1.5 million

SOUTHWATER ONE
2015 RIBA West Midlands Award

ST ANDREW SQUARE
2009 Scottish Planning Awards—Commendation
2009 Landscape Institutes President’s Award
2009 Landscape Institute Awards: Best Landscape Design under 1ha

ST GEORGE’S SQUARE
2008 Civic Trust Award—Commendation
2007 BCSC Gold Awards—Town Centre Environment

TELEVISION CENTRE
2015 World Architecture Festival Finalist: Masterplanning—Future Projects

THINKTANK BIRMINGHAM SCIENCE MUSEUM
2013 ICE Award for Education and Chairman’s Award

THE POST BUILDING
2015 World Architecture Festival Finalist: Commercial Mixed-use—Future Projects

VAUXHALL SKY GARDENS, LONDON
2014 Sunday Times British Homes Awards: Best Housing

WARRIOR SQUARE GARDENS
2012 Civic Trust Awards: Commendation

WIND TURBINES AND PYLONS: GUIDANCE ON THE APPLICATION OF SEPARATION DISTANCES FROM RESIDENTIAL PROPERTIES
2015 Landscape Institute Award—Highly Commended in Local Landscape Planning



MEDIA CITY, SALFORD, UK



NEO BANKSIDE, LONDON, UK



CROSS RAIL STATION ROOF GARDEN, LONDON, UK

UK EXPERIENCE

英国项目





BUCHANAN STREET, GLASGOW, UK

布坎南街 格拉斯哥

继Gillespies受委托策划格拉斯哥市中心的整体公共空间规划后, Gillespies赢得了这项位于该城最著名的中央大街的国际设计竞赛项目。

Buchanan Street is one of the main shopping thoroughfares in Glasgow, forming the central stretch of Glasgow's famous shopping district. The £10m redevelopment has created a new, modern and functional pedestrian-orientated environment based on Gillespies' original Public Realm Strategy for the city centre.



CLIENT: GLASGOW CITY COUNCIL
LOCATION: GLASGOW, UK
COMPLETION: 2006
DESIGN TEAM: GILLESPIES | MARTORELL
BOHIGAS MACKAY ARQUITECTES

This £12 million project involved the reduction of access to vehicular traffic and the creation of a pedestrian-oriented environment. Utilising the themes and directions identified in the Glasgow Public Realm Strategy, the practice produced a design for the street based upon the rich embedded vernacular traditions of the city, interpreted in a modern, clean and functional manner.

As well as using traditional, robust and durable natural stone paving materials, simple and elegant repetitive elements such as lighting and seating components were employed to create a strong rhythm and pattern along the street.

The brief also required strong responses to bring forward new development and express the existing underground access points as key features in the animation of the street. The project has won recognition for its quality both in the UK and abroad, winning numerous major awards.

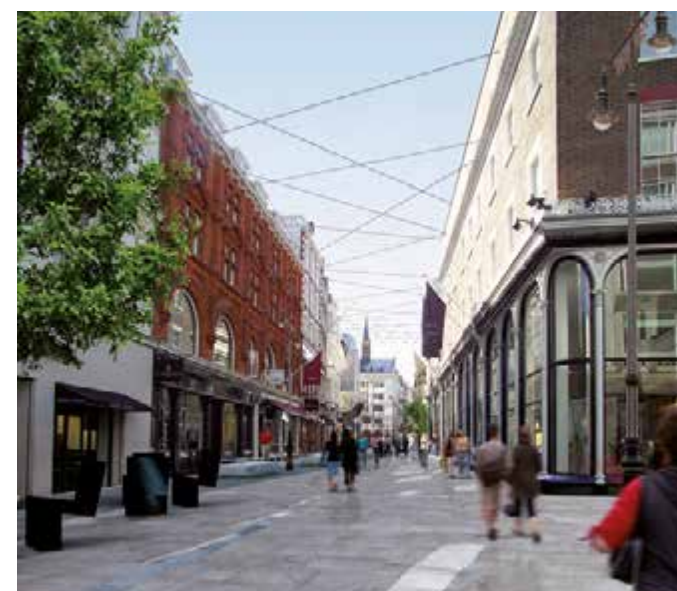


OXFORD, BOND AND REGENT STREET, LONDON, UK

牛津街, 摄政街和邦德街 伦敦

伦敦最著名的三条购物街的改造，是伦敦城五年计划复兴重要景点的一部分。

Oxford Street is Europe's largest high street and a world-famous shopping destination that attracts around 200 million shopping visits yearly. Dominated by narrow and cluttered pavements that were deemed unsuitable for their intense usage, Gillespies have provided a series of proposals to transform the Capital's public spaces and street network.



CLIENT: WESTMINSTER CITY COUNCIL
& THE NEW WEST END COMPANY
LOCATION: LONDON, UK
COMPLETION: 2007
DESIGN TEAM: GILLESPIES |
PINNIGER AND PARTNERS

This project placed Oxford Street in the context of three of London's world famous retail thoroughfares, which include Regent Street and Bond Street. Gillespies produced concept design proposals to radically alter the appearance of these streets, as part of a five year programme to regenerate a number of the capital's most prominent spaces.

Commuters, tourists and shoppers all combine to create an often frantic and overcrowded street scene in this part of London, which provides a challenge to the pedestrian. Gillespies redesigned Oxford Street to address its physical appearance and usage.

In Regent Street and Bond Street, the focus was on preserving their special character and appeal. The practice produced a series of proposals for each street including paving restructuring, lighting, way-finding and innovative proposals to make the pedestrian experience more enjoyable.



SKY GARDEN AT 20 FENCHURCH STREET, LONDON, UK

芬彻奇街20号 伦敦

Gillespies受委托进行这项位于东伦敦地标性大厦顶端的大型屋顶花园的细部及施工设计。

The Sky Garden at 20 Fenchurch Street is a unique public roof garden, celebrating the diversity of plants. Spanning three storeys, and offering 360° views across the City of London, the Sky Garden is an extraordinary addition to the London skyline.



CLIENT: LAND SECURITIES
LOCATION: LONDON, UK
COMPLETION: 2015
DESIGN TEAM: GILLESPIES | RAFAEL VIÑOLY | ADAMSON ASSOCIATES | GROWTH INDUSTRY | BIOTECTURE

Inspired by the gravity defying ancient forests you see on tall outcrops, Sky Garden is an extraordinary world housed under a glass vaulted roof overlooking the City of London. The particular microclimate created under this glass vault inspired the creation of a series of micro-landscaped inspired by other parts of the globe.

The landscape design concept developed a narrative based on the 'Evolution of plants', which has resulted in the creation of a garden split into three zones: Shade Tolerant Forest, a Transition Zone and flowering plants. The top terrace is a cool deep shade forest made of tree fern and fig trees. The middle terrace brings a transition in scale from the forest down to a display of ancient cycads. The lower terrace is filled with colourful plants to delight the senses all year round.

Set amongst the landscaping is a viewing area, terrace, café, bar and restaurant. The Sky Garden has also been designed to offer a series of large, flexible spaces to host a variety exhibitions and corporate events with a capacity of 450 guests.



CROSSRAIL PLACE ROOF GARDEN, LONDON, UK

运交通枢纽公园，伦敦金丝雀码头 伦敦，英国

这是一个位于伦敦金丝雀码头的，连接东西伦敦的重要铁路交通枢纽的公园。

The Crossrail Station Roof Garden in Canary Wharf is the first new building to open for Crossrail—London’s new east-west rail link. Located on top of the Station, the garden is a celebration of the docklands heritage, containing a variety of plants that were brought to London from faraway lands by merchant ships.



CLIENT: CANARY WHARF GROUP
LOCATION: LONDON, UK
COMPLETION: 2015
DESIGN TEAM: GILLESPIES | FOSTER + PARTNERS | ARUP | GROWTH INDUSTRY

Designed to evoke a ship laden with unusual and exotic specimens from around the globe, the roof garden is encased within a complex ETFE lattice timber roof structure, which wraps around the building like a shell with openings that encourage light penetration and natural irrigation. The semi-permeable canopy structure helps to create a localised microclimate allowing the planting of more sensitive and rare species of plants.

The geographic location of the site—directly north of Greenwich—places the docks virtually on the Prime Meridian, dividing the western and eastern hemispheres and inspiring the division of the gardens and planting into two geographic zones, showcasing both Occidental and Oriental species. Internally, the garden is organised around a single landscaped walkway, with multiple smaller paths that branch off in different directions, creating opportunities for chance encounters and providing visitors with a sense of true escape from their urban surroundings. The main walkway simplifies circulation and pockets of seating provides opportunities for visitors to convene and relax.



STRATFORD INTERNATIONAL QUARTER, LONDON, UK

国际中心 - 斯特拉特福德城 伦敦

斯特拉特福德城将承载伦敦2012奥林匹克运动会，该区域已扩展其基建并有能高速连通伦敦中心区及欧洲大陆的交通网络，迄今已建成部分奥运专用设施。

Situated at the heart of Stratford City —home to the 2012 Olympic Games— The International Quarter, Stratford City is one of the UK’s largest mixed-use schemes, providing a vibrant, new urban quarter offering a rich mix of commercial office space, new homes, retail space and community facilities, all set with a unique parkland environment.



CLIENT: LEND LEASE
LOCATION: LONDON, UK
COMPLETION: 2008
DESIGN TEAM: GILLESPIES | ARUP ASSOCIATES | BURO HAPPOLD

The district looked beyond the London 2012 legacy to its role as a leading residential and business hub in London’s East End, in order to attract future investment. As part of this long term strategy, Gillespies was commissioned to prepare a public realm strategy for the site known as The International Quarter Stratford City. This portion of the overall scheme benefits from direct connections to the major rail hub and the Olympic legacy site with its strong open space network.

With its expertise in developing city-scale masterplans, Gillespies prepared guidelines for the sequence of open spaces appropriate for a leading commercial centre, with the emphasis on sustainability. Working alongside lead architect Arup Associates the team delivered a series of design codes that will provide the framework for nurturing the growth of this exciting and dynamic area.



NEO BANKSIDE, LONDON, UK

新河岸 伦敦

一个新的，坐落泰晤士河岸及泰特现代美术馆边的住宅项目，总面积达38,000m²，其景观设计亦是河岸公园的一部分。

NEO Bankside is seductive architecture. On a pocket of land between some single-storey alms houses and the multiplying monoliths that are Tate Modern, the developers have squeezed in a group of exquisite towers and some of the best new landscaping in London.



CLIENT: NATIVE LAND
LOCATION: LONDON, UK
COMPLETION: 2015
DESIGN TEAM: GILLESPIES | RSHP |
GROWTH INDUSTRY | HOARE LEA |
CARILLION | FROSTS LANDSCAPE

NEO Bankside comprises 217 luxury apartments and penthouses across four pavilions that make up a family of contemporary buildings. The ground floor is activated by retail space, restaurants and new landscaping. Developed as an integral part of this residential scheme from the outset, the landscapes blend private garden spaces containing tracts of native plants set within linear groves of alder and birch trees, forming a boundary to a new public realm that links Southwark Street to the Tate Modern. The landscape designs take cues from natural processes found within woodlands, and transpose them to the city.

NEO Bankside's outdoor spaces offer its residents opportunities to engage with nature. The landscaped grounds feature an orchard of seasonal fruit trees, a collection of active beehives, bat and sparrow boxes and a large and well stocked herb garden.



RIVERLIGHT, LONDON, UK

河之光 伦敦，英国

Gillespies 于2010年四月受St James地产集团委托对位于泰晤士河南岸的巴特西区域的‘河之光’综合发展项目进行景观设计，。

A luxury residential-led mixed-use development on a five-acre industrial estate close to Battersea Power Station on the south bank of the River Thames. A proposed pocket park adjacent to the dock inlet provides a generous area of public realm with a mixture of soft and hard landscaping.



CLIENT: ST JAMES GROUP
LOCATION: LONDON, UK
COMPLETION: 2016
DESIGN TEAM: GILLESPIES | RSHP

Working closely with project architects, Rogers Stirk Harbour + Partners, Gillespies has developed a landscape scheme that addresses the need of this new residential community as well as compliments the wider Nine Elms Masterplan. The site forms part of an area of South London that is undergoing a radical transformation with a series of developer lead initiatives that will collectively form a vibrant quarter in which to live, work and play.

The public areas are treated as a revealed river bed with a series of soft, pebble-like forms, while the private courtyards form calm green spaces with heavy tree planting and water gardens. The newly-created river walk — slightly raised to allow views over the river wall to the Thames — brings a 17m-wide boulevard to a previously underused part of the waterfront.



ONE HYDE PARK, LONDON, UK

海德公园一号 伦敦

坐看整个海德公园，毗邻伦敦城最奢华的购物区，海德公园一号唯我独尊的价值绝无仅有。

Located in the heart of Knightbridge, overlooking London's Hyde Park, One Hyde Park is a collection of luxurious apartments and duplexes set within beautiful sculpted landscapes.



CLIENT: CANDY AND CANDY
LOCATION: LONDON, UK
COMPLETION: 2011
DESIGN TEAM: GILLESPIES | RSHP | APS

The project consists of four towers of serviced apartment blocks above a continuous ground floor retail area. Gillespies is designing the landscaping to provide a link between the contrasting parklands and street scene through the use of vertical planted surfaces as well as a major street tree planting programme.

A realignment to the street edge provides an interface with a number of conservatory spaces within the development which facilitate direct access to the retail areas. Continuity of paving treatments and an innovative planting palette aim to make these welcoming and dynamic public spaces.

Tailoring the design to accommodate the existing mature trees called for a range of innovative structural solutions including an ultra slim road deck developed with Arups structural engineers and designed to span over the existing root zone.



PADDINGTON BASIN, LONDON, UK

帕丁顿港 伦敦

公司参与设计及建设帕丁顿港总体规划与重建项目, 包含在原有基础上新的二百万平方英尺的建设。

Located alongside the Grand Union Canal, Paddington Basin is a new waterside quarter in west London.



CLIENT: CHELSFIELD
LOCATION: LONDON, UK
COMPLETION: 2005
DESIGN TEAM: GILLESPIES | RHSP

The development of a public realm strategy for the wider regeneration of the Paddington Special Policy Area (SPA), an area involving over six separate keynote developments and over 7 million ft² of new development. The public realm strategy creates a new quarter with a distinct identity, assisted through the careful application of street materials: paving, roads, footpaths, cycleways, lighting, planting, street furniture and signage.

The strategy identified the key streets and spaces, links and nodes, and identified a common vocabulary, shared by the team to ensure consistency and homogeneity.

The subsequent implementation of the major spaces, quayside areas, streets and highways has provided the emerging quarter with a visually rich landscape of carefully selected high quality materials.



ST GILES CIRCUS, LONDON, UK

圣吉尔斯广场 伦敦

这一位于伦敦著名牛津街的中心大厦下的广场，地理位置显著，是一东西交汇的重要城市坐标点。

As a result of the development of Crossrail station at Tottenham Court Road, a new public space is being created at St. Giles Circus, at the base of the 385-foot Centre Point tower. This new plaza will create a major new interchange in the heart of London's West End.



CLIENT: LONDON UNDERGROUND LIMITED
LOCATION: LONDON, UK
COMPLETION: 2017
DESIGN TEAM: GILLESPIES | STANTON WILLIAMS | ATKINS

Overlooked by the 385-foot tower Centre Point, St Giles Circus will be a world-class plaza, incorporating strong and simple streetscape and built forms, and will become the focus for the wider regeneration of the St Giles Circus neighbourhood. The aim is to create a successful new quarter that will enrich and integrate with the surrounding well-established neighbourhood, making it a vibrant community for people to work, live and play.

The new space will provide an attractive environment for the large volumes of pedestrians using the stations to disperse—a new diagonal access will be established on the historic alignment of St Giles High Street on route to Covent Garden. The scheme will also play a significant role in connecting some of London's most significant areas including Bloomsbury, Fitzrovia, Covent Garden and Soho.



MEDIACITYUK, SALFORD, UK

媒体城市 萨尔福港, 英国

媒体城市位于曼切斯特的萨尔福港口, 横跨二百公顷土地, 将成为英国第一个以媒体为主题的商务城, 也是世界瞩目的先例。

MediaCityUK is now the home to the BBC, ITV, The University of Salford and more than 200 creative and digital businesses. The public realm provides a large-scale grand square with flexible performance spaces, an intimate media park and a bustling boulevard all set adjacent to the stunning waterfront location at Salford Quays.



CLIENT: PEEL GROUP
LOCATION: SALFORD, MANCHESTER
COMPLETION: 2011
DESIGN TEAM: GILLESPIES | WILKINSON
EYRE | BENOY

The second phase of MediaCityUK will complement the existing media hub with the development of a series of high-quality buildings for commercial, residential and leisure use, linked together with a beautifully designed, new public realm.

In September 2010 we completed the new tram spur into MediaCityUK. Working in close collaboration with GMPTE and MPT, we applied our extensive Metrolink experience to deliver the most successful and architecturally cohesive and integrated stop on the whole network.



BRADFORD CITY PARK, YORKSHIRE, UK

布拉德福德镜湖 布拉德福德, 英国

在市政府前建造一个巨大的喷泉广场，继承了原有布拉德福德城市复兴计划的提案。

Bradford's City Park is a new six-acre public realm in the heart of Bradford comprising fountains, trees and attractive green spaces, providing a new destination for visitors to walk, sit and repose.



CLIENT: BRADFORD CITY COUNCIL
LOCATION: BRADFORD, UK
COMPLETION: 2012
DESIGN TEAM: GILLESPIES | ARUP
| STURGEON NORTH ARCHITECTS |
FOUNTAIN WORKSHOP

At the heart of the space is the UK's largest city centre water feature, a 3,600m² 'Mirror Pool' which boasts more than 100 fountains and the tallest fountain at 30m high—the 'Bradford Blast'. These fountains are illuminated at night by a series of laser light projectors and mist effects, which reflect and showcase the 19th century Grade I listed City Hall.

Despite the size of the pool, the water is very shallow—260mm max—changing depth gradually, creating a safe, flexible and dynamic space. The body of water has the ability to ebb and flow to reflect different moods of the city and at different times of the day the water surface is lowered to reveal a causeway opening an alternative and exciting pedestrian route through the space. The pool can be drained to provide a flexible space capable of holding large-scale community events.



TRAFFORD WATERS, GREATER MANCHESTER, UK

特拉福德水域，特拉福德 英国

特拉福德水域是一个坐落在曼彻斯特船只运河岸边的充满活力的住宅社区和拥有不同商业的商业社区。这将是曼彻斯特最大的重建项目之一。

Trafford Waters is a vibrant residential community and diverse business community on the banks of the Manchester Ship Canal in Trafford. This will be one of the largest regeneration projects in Manchester.



CLIENT: PEEL GROUP
COMPLETION: ONGOING
LOCATION: MANCHESTER, UK
DESIGN TEAM: GILLESPIES

Gillespies have acted as project landscape architect and working closely with IBI consultants have been an integral part of the project team advising Peel Land & Property.

Gillespies role on the project has been critical to ensure that the £1bn project is rooted by high design standards and the delivery of a masterplan that will create a sustainable, integrated and vibrant urban neighbourhood. The project will include up to 3,000 new homes and circa 750,000 sq ft of commercial space helping to unlock business and employment opportunities. The development will require new infrastructure that will include an extension to the Trafford Park Metrolink into Salford, new streets, boulevards, cycleways and footways and a green-blue infrastructure including new parks, squares, playgrounds, shared streets and attractive well maintained civic environments.



LEICESTER WATERSIDE, LEICESTERSHIRE, UK

莱斯特水滨，莱斯特 英国

莱斯特水滨是莱斯特市政府的战略重建区，距市中心和大学不到10分钟的步行路程，位于城市河流，运河和步行/骑车网络的中心。

Leicester Waterside is a Strategic Regeneration Area for Leicester City Council located within 10 minutes walk of the city centre and university, and at the hub of the city's river, canal and foot / cycle network.



CLIENT: KEEPMOAT | LEICESTER CITY COUNCIL
LOCATION: LEICESTER, UK
DESIGN TEAM: GILLESPIES | BM3

The city council as landowner staged a design / developer competition for the site and Gillespies supported Keepmoat in their submission, leading the design team and providing masterplanning, urban design, landscape and planning inputs.

The proposals include a masterplan and layout for 350 homes, workspace, retail, leisure and a new neighbourhood park. At the heart of the scheme is Soar Island. Our designs for this prominent hub for canal and river include a wildlife area, to be managed by a local trust, and an exciting waterside activity destination including a café, boating facilities and views to Leicester Cathedral—the burial place of Richard III.



WEST GROVE, ELEPHANT PARK, LONDON, UK

大象公园，伦敦 英国

西格罗夫是地标大象公园重建和住宅项目的第二阶段项目。整个项目将在可持续设计原则的基础上创造一个新的生活环境并提供约3000套新房。

West Grove is the second phase of the landmark Elephant Park regeneration and residential project. The entire project will see around 3,000 new homes in a new living environment based on sustainable design principles.



CLIENT: LEND LEASE
LOCATION: LONDON, UK
COMPLETION: 2020
DESIGN TEAM: GILLESPIES | AHMM |
MACCREANOR LAVINGTON | DUGGAN
MORRIS

Gillespies is the public realm and landscape designer for West Grove (MP2). West Grove will feature two residents' courtyards, offering a distinctive woodland or orchard landscape, as well as play areas, relaxed seating and richly varied planting.

The green landscape will stretch from the courtyards where new trees, living walls and green roofs will help to filter the air. There will also be a south-facing amphitheatre that can host everything from performances to picnics, while Orchard Gardens will feature a courtyard orchard—an expression of the site's natural history, framed by secluded seating.

West Grove will offer communal grow gardens where residents can plant and nurture vegetables and herbs. The gardens will enhance West Grove's community, giving people the chance to enjoy the natural environment. Gillespies is also the public realm masterplanner for the regeneration of the entire Elephant Park site, as well as the public realm designer for other phases of Elephant Park including South Gardens (MP1), and its new park.

INTERNATIONAL EXPERIENCE

国际项目





SALARIEVO MASTERPLAN, MOSCOW, RUSSIA

开发集团Salavievo社区一期建设，莫斯科 俄罗斯

Salarievo社区规划是俄罗斯莫斯科以景观为主导的住宅设计的一个重要例子。总体规划的灵感来自于它周边的自然环境，创造一个充满活力的社区。其社区中心有一个重要的景观空间，为家庭生活提供一个休闲娱乐的场所。

The planned community of Salarievo is a leading example of landscape-led residential design in Moscow, Russia. The masterplan is inspired by its naturalistic surroundings, creating a dynamic community with a significant landscape at its heart that provides a canvas for family life.



CLIENT: PIK GROUP
LOCATION: MOSCOW, RUSSIA
COMPLETION: ONGOING

Gillespies' landscape concept takes full advantage of Salarievo's beautiful naturalistic 'forest' setting, drawing nature right into the heart of the scheme through a myriad of verdant spaces - parks, squares, play-able zones and civic spaces - that offer a wide variety of settings for daily life, encouraging social interaction and creating a place where people want to live, work and play. The masterplan focuses on creating a 'liveable city' where walking, cycling, play and social interaction is encouraged and is key to the schemes success as a new residential quarter.

A boulevard or 'green spine' – surrounded by active frontages and interspersed with a series of public spaces – defines and connects the site from north to south together with a series of neighbourhoods, each defined by three linear parks. These linear parks are designed in such a way to be overlooked and defined by the surrounding built form. Six distinct neighbourhoods are formed by these linear parks, and connected by the main boulevard. They are referred to as Forest Neighbourhood, The Gateway, Green Park, Forest Enclave, Green Village and Woodland Town.



ARZANAH MALL, ABU DHABI, UAE

阿尔宰奈岛购物中心及五星级酒店

阿布扎比，阿联酋

这是一个阿联酋知名的，于购物娱乐休闲为一体的大型开发项目，位于阿布扎比岛的入口处 - 以运河为核心，提供豪华的公寓楼和最先进的零售和休闲设施，都位于广阔的公共花园内。

Gillespies作为该项目的景观、水景以及道路指引系统设计的顾问。

Strategically located at the gateway point to the island of Abu Dhabi, this prestigious mixed-use retail and leisure development —with a canal at its heart— provides luxurious apartment towers and state-of-the-art retail and leisure facilities, all set within extensive communal gardens.



CLIENT: CONFIDENTIAL
LOCATION: ABU DHABI, UAE
COMPLETION: 2011
DESIGN TEAM: GILLESPIES

The Arzanah development is located at the gateway to Abu Dhabi Island. The mixed-use development includes luxurious apartment towers and villas surrounded by communal gardens and extensive walking and cycling trails. State-of-the-art leisure facilities as well as a hotel and an international school make Arzanah a complete urban oasis in Abu Dhabi.

World-class shopping, leisure and sports facilities are crucial to the success of the development. Gillespies' landscape design, including water features, wayfinding signage and visual branding, recognise the importance of the visual quality of the development on approach, and will be designed to impress and attract shoppers and visitors.

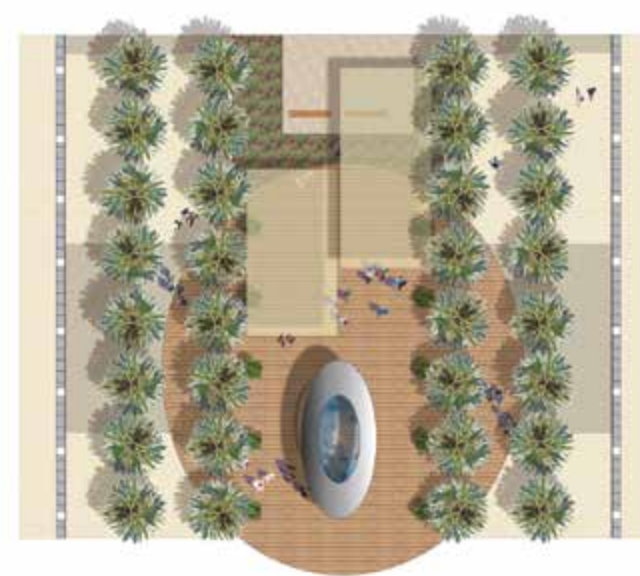


DUBAI INTERNATIONAL FINANCIAL CENTRE, UAE

迪拜国际金融中心 迪拜

迪拜正经历着一系列大型建设用以稳固其在中东城市中显著的金融等重要位置。

The Dubai International Financial Centre (DIFC) is a city in microcosm. A dynamic, collective landscape of buildings, streets and places, which distinguishes itself from other world class financial districts by incorporating leisure and cultural facilities to create a vibrant new district.



CLIENT: DUBAI INTERNATIONAL FINANCIAL CENTRE
LOCATION: DUBAI, UAE
COMPLETION: STUDY ONLY
DESIGN TEAM: GILLESPIES

The Dubai International Financial Centre (DIFC) is a new financial centre of world importance. Set between the financial markets of Europe and Asia, this new financial and business district is aimed at providing world-class trading and banking facilities for the Middle East. This entirely new central business district for Dubai extends for more that a kilometre and covers forty eight hectares.

Gillespies has set out a contemporary vision and concept for the public realm in keeping with the buildings defined by some of the worlds most well-known architects. The design has been developed using a thorough understanding of the local climate and the varying ways in which space will be used throughout the seasons. Innovative shade structures and the creative use of paving, water and planting will be combined to create a series of distinctive and exciting spaces that encourage outdoor activity in an environment that promises to deliver a unique and memorable contribution to the city.



PORT BAKU, AZERBAIJAN

新住宅区 开罗

埃及首都开罗, 解决该国缺乏高质量综合小区与日益增长的住房需求之间的矛盾迫在眉睫。

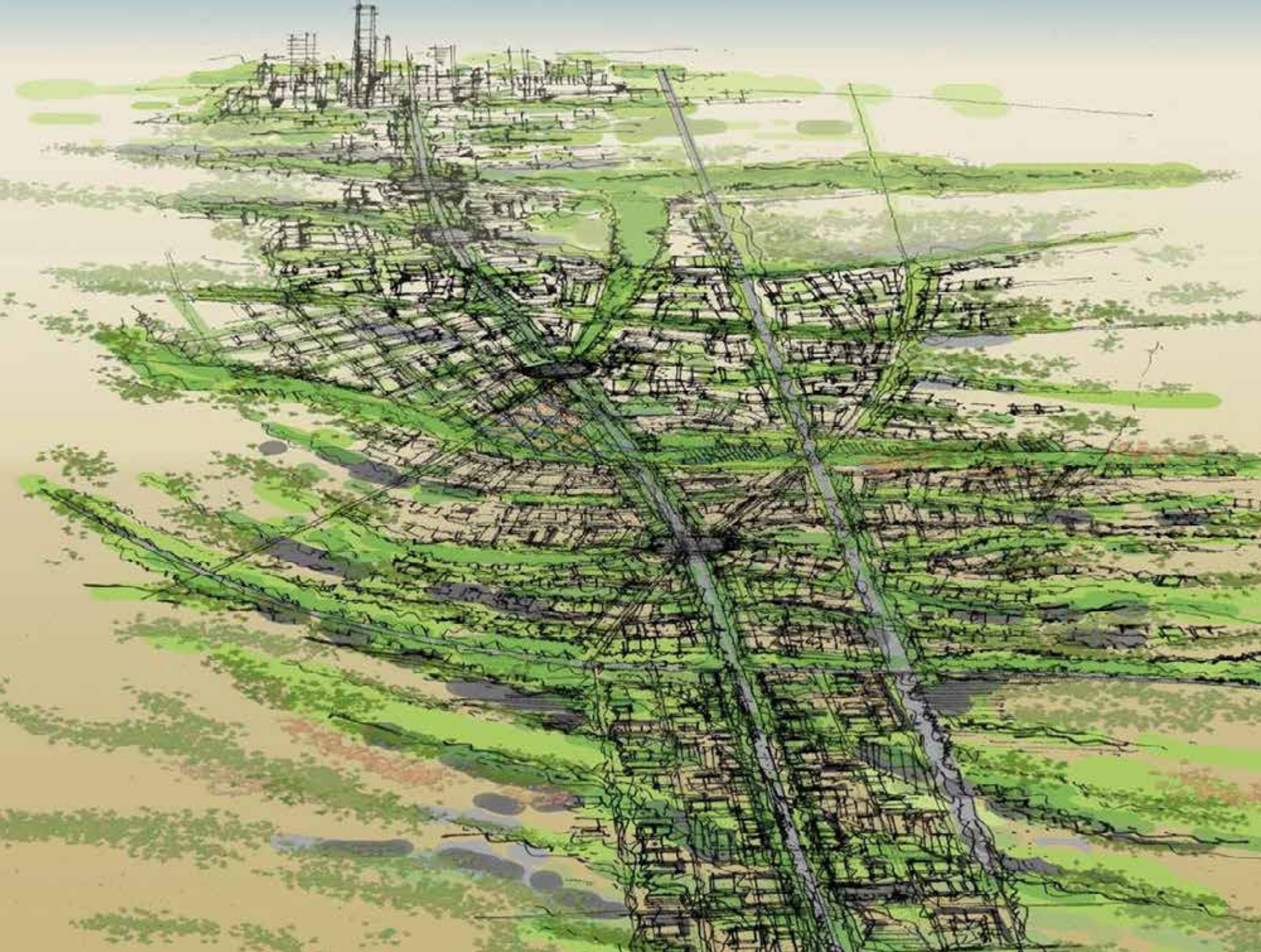
Port Baku is the largest port and city in Azerbaijan and sits on the edge of the Caspian Sea overlooking the mountains to the north and west.



CLIENT: PASHA CONSTRUCTION
LOCATION: BAKU, AZERBAIJAN
COMPLETION: 2011
DESIGN TEAM: GILLESPIES | MACE | INTERNATIONAL | BROADWAY MALYAN | LDC | GROWTH INDUSTRY

Located on a prime site overlooking the waterfront, this project consists of mixed use developments including high end retail streets, landmark office space, world class spa and health centre, an iconic bank and an exclusive international quality hotel along with residential towers. The Hotel facilities and services will include a VIP entrance plaza space, 24 hour concierge and security, gym and wellness complex and multipurpose convention rooms.

Vertical street elements such as tree planting and lighting are to be developed to interface with views from the hotel suites. Gillespies has designed and detailed the streetscape including a key retail pedestrian street which includes hotel and world class tower atrium plaza spaces and the main roof podium space with gardens, tennis facilities and restaurant terrace.



CAIRO NEW CAPITAL, EGYPT

新住宅区 开罗

埃及首都开罗, 解决该国缺乏高质量综合小区与日益增长的住房需求之间的矛盾迫在眉睫。

Cairo New Capital, Egypt comprises a masterplan for a new capital city for the country on land between the existing conurbation of Cairo and the Suez canal.



CLIENT: EAGLE HILLS
LOCATION: CAIRO, EGYPT
DESIGN TEAM: GILLESPIES | MACE

The new city comprises a vast 685m² of mixed development with all components of a modern and sustainable city. The city envisages a range of key moves including the establishment of a new government quarter based on decanting government departments from old Cairo. Transportation, energy generation and water supply are major considerations. First phase requires the establishment of extensive residential areas and neighbourhood facilities, a downtown with retail and high rise development including the tallest building in Africa and major leisure/hospitality offerings.

After a rigorous selection process Gillespies was appointed with two other firms to jointly masterplan the new City. Gillespies attended an summit in Cairo with the client - Eagle Hills - and their project managers and stakeholders to strategise how to approach and develop a methodology for organising and phasing such a major development undertaking.



MASDAR CITY, ABU DHABI, UAE

马斯达尔科技研究所 阿布扎比，阿联酋

“零碳”零废物的一个组成部分 - 马斯达尔市已成为世界上可持续的基准，在阿布扎比创造了世界上第一个完全绿色的城市。

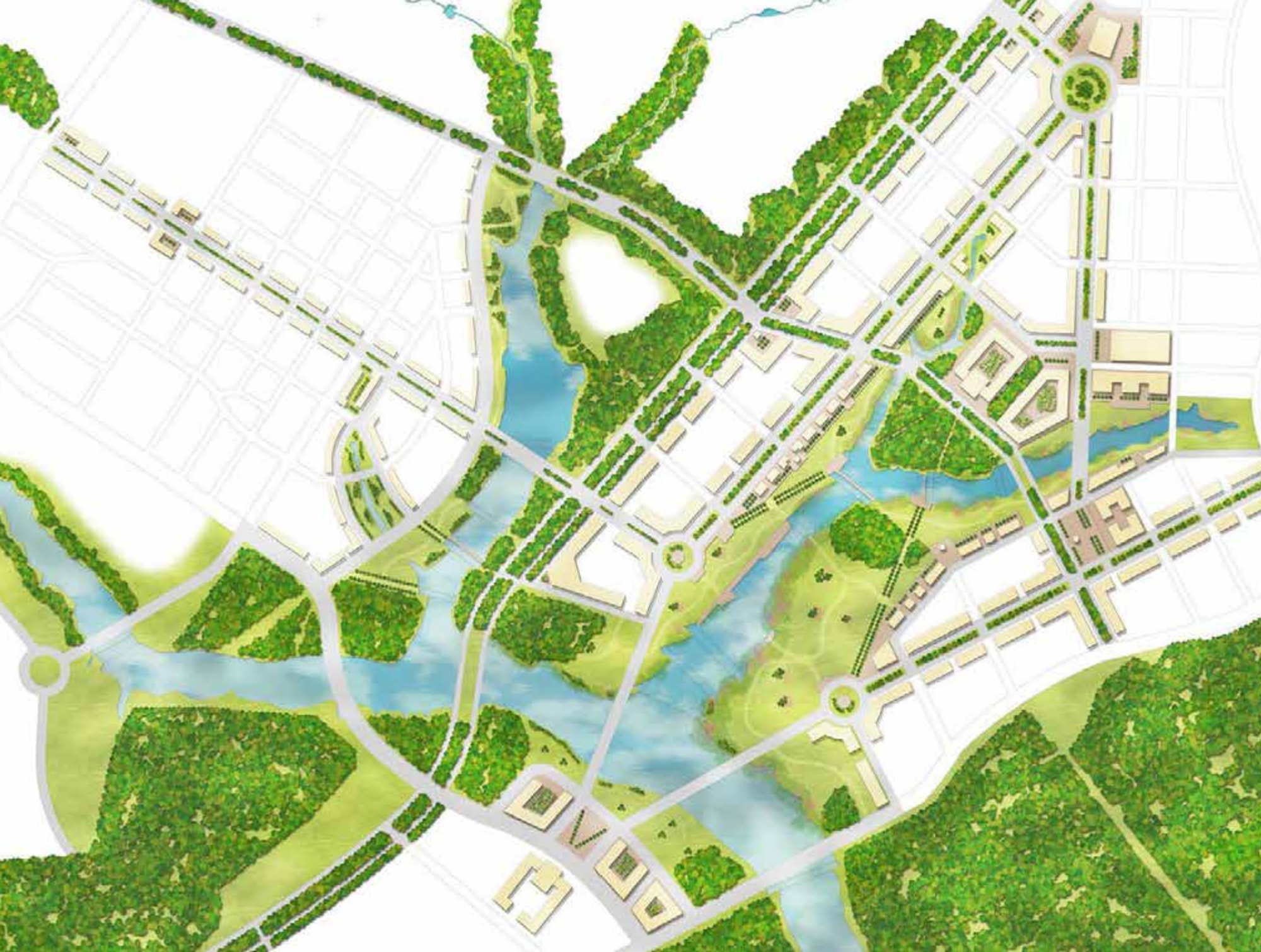
An integral part of ‘zero-carbon’ ‘zero-waste’ — Masdar City has become a worldwide sustainable bench mark, creating the world’s first totally green city in Abu Dhabi.



CLIENT: MASDAR-ABU DHABI FUTURE ENERGY COMPANY
LOCATION: ABU DHABI, UAE
COMPLETION: 2014
DESIGN TEAM: GILLESPIES | FOSTER + PARTNERS | WHITEPINE CONSULTING | PARSONS BRINCKERHOFF

Gillespies designed the campus’s landscapes and urban realm to provide an attractive, high-quality and accessible environment for all users. The completed Campus consists of a series of courtyard and street spaces, each with a distinct theme derived from characteristics of the regional landscape, and with sustainable design at their core.

Gillespies employed landscape design principles that reduced air temperature in the public spaces, through use of shading by buildings and planting. The planting scheme provides year-round visual interest, with flowering grasses, shrubs and trees offering bursts of reds and yellows in contrast to the green oasis. Native plant species were sourced from local nurseries to reduce environmental impact and directly link Masdar Institute to its immediate context. The need for irrigation is reduced, and is fed by recycled water. A dramatic main courtyard—‘the Oasis’—provides the campus with a flexible space suitable for individuals, small groups or large gatherings, with numerous seating areas surrounded by lush planting and gently bubbling water features.

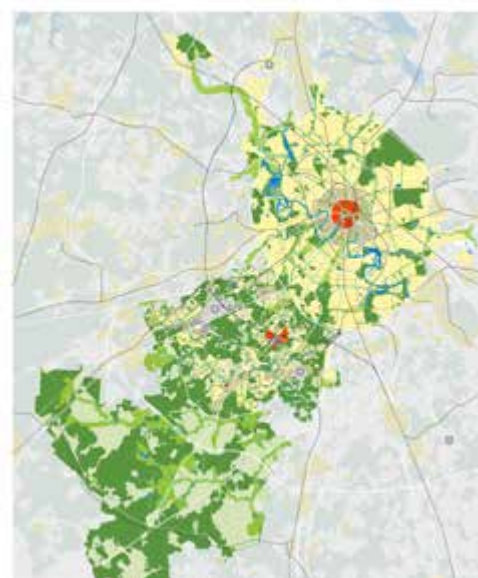


MOSCOW EXPANSION MASTERPLAN, RUSSIA

莫斯科城市拓展方案，莫斯科

一个国际评审团授予了英美团队设计的莫斯科市新首都设计一等奖，Gillespies 为设计提供了主要设计思想。

An international jury awarded the first prize in the design of the new Capital District of Moscow City to the Anglo-American team in which Gillespies played a central role.



CLIENT: GOVERNMENT OF MOSCOW
LOCATION: MOSCOW, RUSSIA
DESIGN TEAM: GILLESPIES

The Capital Cities Planning Group (CCPG), is an Anglo-American team. The 'City in the Forest' plans for 1.7 million people, providing 800,000 new jobs with a focus around the 'Triple Helix of Government, Education and Business'.

The federal city plan looks to create an integrated, properly-planned urban hierarchy served by a transit-orientated movement system around a series of ecological lakes designed by Gillespies. Gillespies used the natural topography of the site to create the lakes as the setting for the new Federal District, and this was a key factor for the competition jury when they appraised the different proposals. This landscape-based approach harnesses existing topography to work with a series of lakes in the centre of the new district, surrounded by a forest landscape.

A thorough understanding of the Russian landscape, culture and climate was a crucial factor for the Gillespies team in helping to achieve the competition win.



CAPITAL MASTERPLAN, SAUDI ARABIA

沙特首都总体规划，沙特

一个面积1,413公顷的新的总规划 - 将重组大部分城市中心地区的大部分，使这个宗教和历史的目的地更加突出。

A new masterplan - encompassing an area of 1,413 hectares—that will reorganise a large part of the Central Area, bringing greater focus to this religious and historic destination.



CLIENT: CONFIDENTIAL
LOCATION: SAUDI ARABIA
COMPLETION: ONGOING
DESIGN TEAM: GILLESPIES

The vision for the masterplan is to create a vibrant and welcoming which reflects its status as a religious centre by providing a safe and comfortable environment for its visitors and residents, and where the urban fabric and community infrastructure enhance social and cultural heritage, ensuring an excellent quality of life.

A series of new pedestrian friendly routes will have different treatments along its length to create distinctive identities and conform to its primary use—to provide a high crowd-holding capacity and to improve movement corridors to and from the capital centre.

Designed to satisfy the Peak Hour Travel Demand of more than one million people. The organisation of visitors' accommodation and the provision of wide pedestrian corridors will ensure that almost 600,000 people will be able to walk to their destination, while the transport systems will cater for an additional 500,000 people an hour, conveniently delivering visitors directly to the centre.



RIYADH MALL, SAUDI ARABIA

利雅德购物中心，利雅德 沙特

在沙特阿拉伯王国利雅德的一个有名望的大型综合零售和休闲发展中心里提供创新性的一系列景观空间。

A landscape vision for an innovative series of landscape spaces within a prestigious large mixed retail and leisure development in Riyadh, Kingdom of Saudi Arabia.



CLIENT: CONFIDENTIAL
LOCATION: RIYADH, SAUDI ARABIA
COMPLETION: 2014
DESIGN TEAM: GILLESPIES

The development is located within the main shopping district of Riyadh. The mixed-use development includes a 5* hotel and shopping streets clustered around a series of dramatic themed garden.

Gillespies' landscape vision is to create a striking green oasis, a focal point for leisure activities and events choreographed with the hotel offer. The design includes a major water feature, food and beverage outlets set with rolling topography and lush planting. The concept is unique in the area and aims to provide both the shopper and hotel guest with a compelling and comfortable place to experience, alongside a world class retail offer.

Climate control is essential in delivering comfortable spaces in this region, and will be an important contribution to a pleasurable shopping experience, with shade and cooling as an important aspect of the design.



ALEMDAG MASTERPLAN, ISTANBUL, TURKEY

Alemdag镇总体规划，土耳其

Alemdag是一个新的社区，位于伊斯坦布尔城市的东北边缘。拟建项目位于270公顷的起伏地带内，包括1084个住宅楼和房屋，其中有别墅和公寓楼。

Alemdag is a new community set on the edge of the North East edge of Istanbul. Set within 270 hectares of undulating land, the proposed development comprises 1084 residential units including villas and apartment buildings.



CLIENT: FIBA GARYMENKUL
LOCATION: ISTANBUL, TURKEY
COMPLETION: 2013
DESIGN TEAM: GILLESPIES

The successful development proposals rely heavily on the integration of the residential community with its landscape setting. As Landscape Masterplanners for the design team, Gillespies' placemaking and landscape design principles were pivotal in securing the international competition winning scheme.

A key element of the proposal is the creation of a linear park that meanders through the development at a constant contour: the park acts as a comfortable conduit for cyclists and pedestrians as well as accommodating facilities for local play and family relaxation. Another key feature of the plan is an extensive green infrastructure, helping to create a garden city that responds positively to the location of the new community close to the forest edge.

Abundant opportunity to use outdoor spaces is facilitated by a plateau park linking luxury apartment zones. The park contains community facilities including swimming pools, sports facilities, play areas, gardens and barbecue areas.

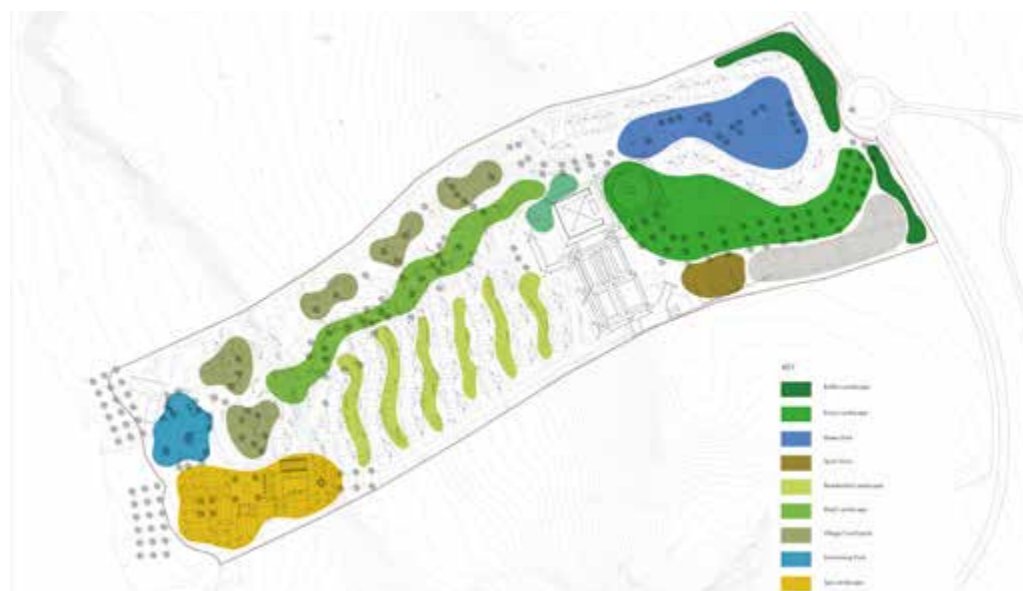


BOA VISTA, HILTON RESORT, CAPE VERDE

博阿维斯塔岛希尔顿度假村，博阿维斯塔岛

这是Gillespies为新的豪华型希尔顿度假村做的总体规划。

Gillespies has prepared a masterplan for this proposed new luxury Hilton resort



CLIENT: HILTON HOTELS AND RESORTS
LOCATION: CAPE VERDE
DESIGN TEAM: GILLESPIES | TOM RUSSELL DESIGN

The layout of the masterplan designed by Gillespies seeks to take advantage of the level changes within the site, to ensure sea and sunset views for as many of the rooms and facilities as possible. The main buildings are located at the entrance to the site and at beach level, ensuring easy access to these facilities while providing a quieter and more informal setting for the residential units located within the middle of the site.

A dry creek divides the site along its length and this has been employed as a natural separation of accommodation types, providing a 'village' setting with smaller units on the northern side and a higher density area on the southern side, in order to accommodate different guest needs. These areas whilst being visually separated are linked by footpaths and bridges that links them to all the site facilities.

The Spa, retail and restaurant facilities are grouped at the lower end of the site, ensuring access to residents from adjacent developments and beach users as well.



YENKIT RESORT, OMAN

Yenkit 度假村，阿曼

Yenkit位于阿曼湾马斯喀特东南部二十公里，将是一个世界级的旅游和休闲度假村社区。该地区包括九百五十公顷的丘陵和岩石景观。Hajar山在场地的南部，海边在场地的北部。

Yenkit will be a world class tourism and leisure resort community twenty km to the south east of Muscat on the Gulf of Oman. The site comprises nine hundred and fifty hectares of hilly and rocky landscape at the base of the Hajar Mountains to the south and coastal edge to the north.



CLIENT: YENKIT TOURISM
DEVELOPMENT LLC
LOCATION: OMAN
DESIGN TEAM: GILLESPIES

The development comprises 1600 luxury villas and cluster homes (in Omani style) with Gary Player designed international championship 18 hole golf course at its centre. Other facilities include four international five star resort hotels and related retail.

The approach to landscape design is based on a desert resort style, seeking to use native plant species where possible with oases focussed in the main activity areas. The overarching intention being to achieve a landscape that is in tune with the natural environment as much as possible but recognising that some alleviation from the harsh conditions will need to be accommodated.



PIK GREEN PARK, MOSCOW, RUSSIA

PIK开发集团绿色公园社区，莫斯科
俄罗斯

此规划将莫斯科俄罗斯的一个旧工业地块改造成一个拥有13000人口的新的充满活力的社区。社区为人们提供急需的“经济住房”，零售和休闲设施以及有吸引力的多个公共空间。

A masterplan to transform an existing brownfield site in Moscow Russia, into a new vibrant neighbourhood for 13,000 people, providing much-needed 'economy housing', retail and leisure facilities alongside an attractive public realm.



CLIENT: PIK GROUP
LOCATION: MOSCOW, RUSSIA
COMPLETION: ONGOING

PIK Green Park provides an important step forward in PIK Group's desire to bring new life to this area of Moscow. The scheme will provide new facilities for local people and much-needed new housing, creating a vibrant new destination only 45 minutes from the Red Square with easy access to the local river, forests, as well as the Botanical Gardens.

The design concept behind Green Park is based on the idea of shaping the masterplan around two main civic and urban spaces, providing opportunities for the public to gather together to enjoy ample access to retail facilities and vibrant open spaces where they can play, sit and relax. This will provide a step change from the surrounding residential developments which neglect the important role of public space in the commercial success of the development.



PYRAMID HEIGHTS, CAIRO, EGYPT

新住宅区 开罗

位于开罗的一个100公顷的大型的总体规划。创造一个在环境上可持续发展的和充满活力的城市。规划也很容易适应人口增长的需求。

An extensive masterplan for the redevelopment of a 100-hectre site in Cairo, to create an environmentally sustainable and vibrant town that can easily adapted to meet the demands of an increasing population.



CLIENT: SAMCRETE
LOCATION: CAIRO, EGYPT
COMPLETION: 2014
DESIGN TEAM: GILLESPIES | SOM |
BURO HAPPOLD

The design team's vision for the 100 hectre site is to create an environmentally sustainable and vibrant new town. The masterplan will be firmly embedded within the cultural context and challenging terrain of the area, maximizing its views of the Pyramids and the Cairo skyline. The development approach will be very people-oriented with social interaction and community cohesion at the heart of the proposals and most amenities available within walking distance. Numerous attractive public spaces will be available for a variety of activities.

A distinct contemporary and cosmopolitan identity will be fused with local style, art and plantings. The new town will ultimately be home to around 6,500 people, composed of high-end apartments, townhouses and luxury villas, in addition to a mixed use 'downtown' area with new commercial office space, boutique shopping, restaurants, cafés, a boutique hotel and outdoor spaces.



SNEGIRI ECO, MOSCOW, RUSSIA

Snegiri生态项目，莫斯科 俄罗斯

该项目为创建一个令人兴奋的，具有当代感并在环境上可持续发展的一个充满活力健康的生活方式和价值观的住宅社区提供了模板。

The project creates an exciting, marketable contemporary, and environmentally sustainable template for the creation of a vibrant lifestyle conscious residential community based on healthier living and values.



CLIENT: SNEGERI I S+T INVESTMENTS
LOCATION: MOSCOW, RUSSIA
COMPLETION: 2015
DESIGN TEAM: GILLESPIES | BOGLE ARCHITECTS

Snegiri ECO is a competition winning concept to create an eco-neighbourhood with a transformational landscape; it will encourage an immersive experience of nature for people now and evolve dynamically to meet the greener lifestyles we will all be leading in the future. The development will grow from the fertile setting of the site by the lake. The 'leaves' of the landscape will connect all areas of the development.

The site layout is arranged as a series of terraced community 'leaves' set into the existing slope to provide views out over the park and wetland below. The residential units are clustered around a central community space that acts as a heart to the development that connects the leaves like a stem.



HEATH TOWN MASTERPLAN, WOLVERHAMPTON, UK

希思城总体规划，伍尔弗汉普顿 英国

伍尔弗汉普顿市议会委托Gillespies设计城市总体规划，以更新希思城镇庄园和周边地区。

Gillespies were commissioned by Wolverhampton City Council to produce a masterplan for the transformation of the Heath Town Estate and surrounding area of the city.



CLIENT: WOLVERHAMPTON CITY COUNCIL
LOCATION: WOLVERHAMPTON, UK
DESIGN TEAM: GILLESPIES | KIM SANGSTER ASSOCIATES

The 1960's estate reflects the style of that period, with large slab building blocks and towers set within a landscape setting and connected by raised walkways—the layout relates poorly to the main road and its surroundings and the estate suffered from neglect and a poor image for some years.

The masterplan is a result of extensive consultations and aims at providing a variety of dwelling types as well as some commercial and health facilities within a more efficient layout, whilst creating public spaces that have a purpose and successfully relate to the existing and proposed development units.

Consultation findings were incorporated into final proposals which also include additional development sites adjacent to the Estate. The outputs comprise an additional 330 residential units and supporting commercial and health facilities.

Gillespies have been recommissioned by the council to refresh the masterplan to support a developer competition.



ABU DHABI PUBLIC REALM STRATEGY, UAE

阿布扎比公共环境设计指导，阿布扎比
阿拉伯联合酋长国

Gillespies为阿布扎比的整个酋长国提供了广泛而详细的“公共领域设计手册”，涵盖公共休憩用地的规划，设计和建造的各个方面。

An extensive and detailed Public Realm Design Manual for the entire emirate of Abu Dhabi, covering all aspects of planning, design and construction of public open spaces.

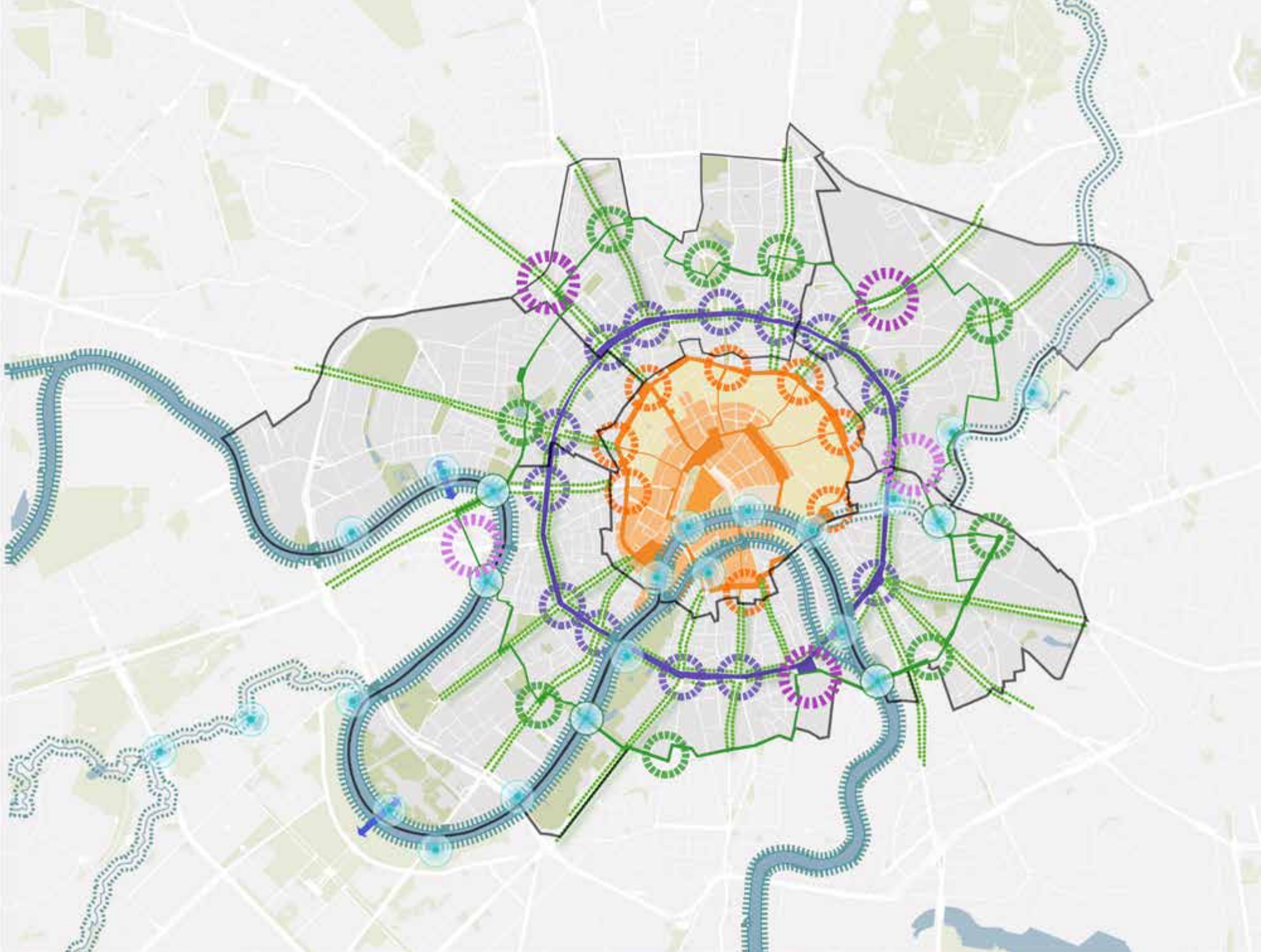


CLIENT: ABU DHABI URBAN
PLANNING COUNCIL
LOCATION: ABU DHABI
COMPLETION: ONGOING
DESIGN TEAM: GILLESPIES

Covering the municipalities of Abu Dhabi, Al Ain and Al Gharbia, the manual will cover all aspects of the planning, design and construction of public open space, public realm and streetscapes across the Emirate.

Design guidance will be produced all typologies and hierarchies of open space with the intention of creating a World-Class public realm network for the Emirate. Best practice guidance and open space prototype designs will complement the regulatory aspects of the manual. Gillespies' scope also includes the production of an Open Space Strategy for the Emirate to ensure that extensive levels of open space are delivered up until 2030.

A key part of the project is developing an Estidama (Arabic for sustainability) rating system specifically for all public realm projects.



MOSCOW CITY CENTRE PUBLIC REALM STRATEGY, RUSSIA

莫斯科市公共领域设计指导，莫斯科 俄罗斯

这是在莫斯科市中心彻底改善公共领域的战略，以改善城市的街道和公共空间，这将大大有助于提高其公民的城市生活质量。

A strategy for the radical improvement of the public realm throughout Moscow City Centre, to improve the city's streets and public spaces, which will contribute significantly to improving the quality of urban life for its citizens.



CLIENT: MOSCOW CITY GOVERNMENT
LOCATION: MOSCOW, RUSSIA
COMPLETION: 2013

Following the success of Gillespies' landscape approach to the Moscow City Expansion Competition, the firm was appointed by Moscow City Government to produce a strategy for the improvement of the public realm throughout Moscow City Centre. The strategy builds on work undertaken by various departments of the City Government and in the best knowledge of current and future plans for development by all those involved in the built environment of Moscow.

The Strategy will be formally adopted by the City and has been designed for use by officials in developing and evaluating projects and for designers to reflect public realm principles, typologies and details in their work. The strategy takes as its point of departure the intrinsic form and character of Moscow, the climate of the City, the culture of its people and the movement system. Gillespies worked with an international team of experts in the fields of architecture, transport, lighting, engineering and surveying to develop innovative, yet practical guidance for all aspects of the public realm.



ROMA STREET PARKS, BRISBANE, AUSTRALIA

罗马街公园 布里斯班，澳大利亚

罗马街公园占地16公顷，位于昆士兰州，布里斯班。其前身是一铁路货运站，设计将现有资源加以重整利用，使之成为一个休闲娱乐公园。

An oasis in the heart of Brisbane’s Central Business District. Roma Street parkland covers 16 hectares making it one of the world’s largest subtropical gardens situated in a city centre.



CLIENT: CITY OF BRISBANE
LOCATION: BRISBANE, AUSTRALIA

Roma Street Parkland is the world’s largest subtropical garden in a city centre. The parkland features a variety of themed gardens and recreational areas, with a web of pathways and boardwalks traversing cascading waterways and rocky outcrops, and also numerous artworks by 16 local artists.

What started as design challenges were transformed into positive features of the Parkland by the Gillespies team. The problems of severe topography were addressed by the introduction of a series of bridges and walkways which provide spectacular look outs and treetop walks. Planting throughout the Parkland has been carefully considered and is sensitive to the climate. Microclimates representative of subtropical Queensland have been created in the Parkland as distinct precincts, creating the feel of a subtropical wonderland representing Queensland’s varied plant life. The precincts in the Parkland are linked through several elements. The water feature which flows through the Spectacle Garden represents the spring from which the nearby Spring Hill took its name, links the Upper and Lower Parkland.

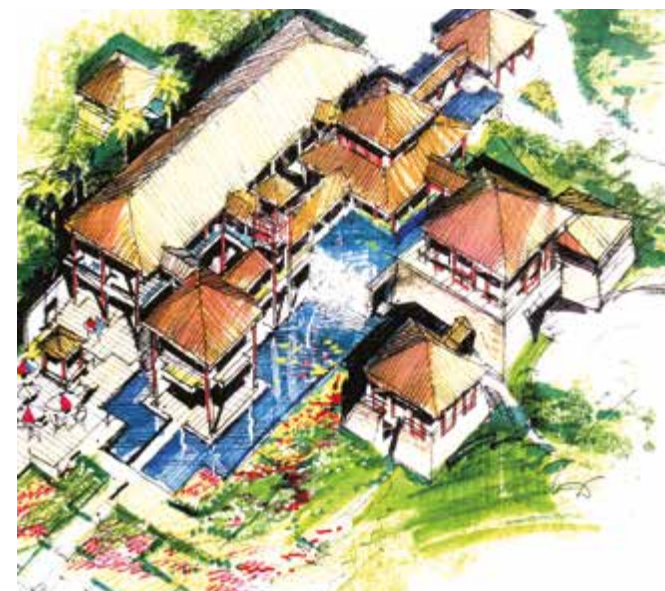
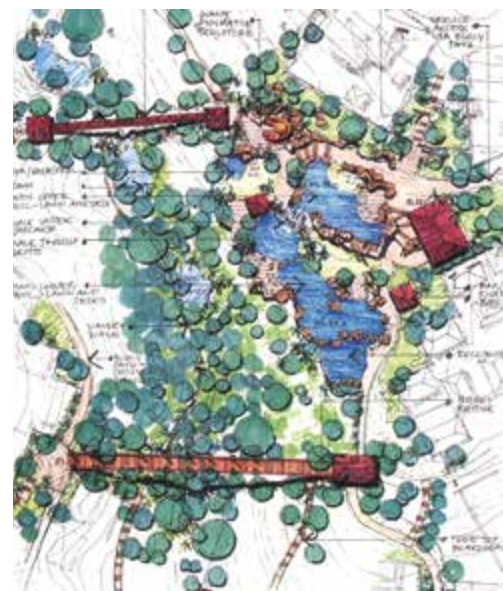


UNGASAN RESORT, BALI, INDONESIA

昂格桑度假胜地 巴厘岛，印度尼西亚

受丽思卡尔顿酒店集团委托设计这一位于巴厘岛南岸的，占地17公顷的五星级度假酒店。

Gillespies was commissioned to masterplan 17 hectares of land on the cliff tops of the south coast of Bali for this five-star resort.



CLIENT: RITZ-CARLTON GROUP
LOCATION: BALI, INDONESIA

The steep site features spectacular ocean views and a dry gully. Concepts were developed responding to the indigenous culture and landscape, providing a series of small "villages" of bungalows throughout common recreation areas which include pools with kiosks, rainforest treetop walks, a traditional "Pura" or shrine, botanic gardens and the beach at the base of the 100m high cliffs.

Following this commission, the practice's involvement was extended to further design Stage 1 of the site, which incorporated most of the above open space areas as well as the central facilities building. The residential villages were designed in detail to display themes relevant to the Balinese landscape and culture.



LAKE KAIAFAS, GREECE

湖 西伯罗奔尼撒半岛，希腊

湖是享誉国际的度假胜地，毗邻美丽的西伯罗奔尼撒半岛海岸。然而自2007年以来的毁灭性大火烧毁了方圆几百公里的珍贵的松林。

Lake Kaiafas is one of the most naturally beautiful areas in all of Ilia, adjacent to the coast, in the western Peloponnese. It suffered catastrophic fires in 2007 which destroyed hundreds of kilometres of pristine pine forests.



CLIENT: TOURISM DEVELOPMENT CO
LOCATION: PELOPONNESE, GREECE
COMPLETION: 2008
DESIGN TEAM: GILLESPIES | WHITEPINE CONSULTING LIMITED

Alongside the stabilisation and repair of the forests following the fires, the opportunity was seized to improve Lake Kaiafas and provide an accessible resource for people to use. The site includes a unique combination of features such as freshwater lake, extensive forests, coastal edge, diverse ecology, a famous thermal spa, and significant archaeological, historic and cultural richness.

The destination offers visitors and new ecology learning centre, a variety of water sports, eco-camping sites, spa facilities, café's and restaurants as well as cycling, footpath and bridleway networks.



ROMAN BATHS, BEIRUT, LEBANON

罗马浴场 贝鲁特

罗马浴场是黎巴嫩最有价值的考古场及旅游景区，位于贝鲁特金融与文化中心。

The Roman Baths is one of Lebanon's most valuable archaeological sites and is located in Beirut's central district—the traditional heart of economic and cultural life in the capital—close to the Place de l'Etoile and national government buildings.



CLIENT: SOLIDERE
LOCATION: BEIRUT, LEBANON
COMPLETION: 2013

Following an international design competition win, Gillespies are redesigning the Roman Baths to become an important visitor centre and concert venue amidst themed terraced gardens. At the current time the archaeology is not celebrated, with limited views and opportunities to learn and interact with this Roman history. The current scale of the green open spaces does not acknowledge the aspiration to host large events and crowds into the area, turning the Roman Baths into a flexible canvas for cultural demand.

The Omar Daouk space, also located in the central district, is dominated by the impression of an isolated green island surrounded by busy and heavily trafficked roads. Gillespies will redesign the area, remodelling the traffic flows to create a significant new public space with good pedestrian connections.



SOUTH BANK, BRISBANE, AUSTRALIA

南岸再开发项目 布里斯班，澳大利亚

公司曾为澳大利亚昆士兰州的布里斯班地标性的场地再开放项目进行景观与城市设计的咨询工作。

The South Bank Parklands—located on the former site of World Expo 88—is one of Brisbane’s most important cultural precincts regularly used to host large scale festivals and events. The parklands are a mixture of rainforest, grassed areas and plazas as well as features such as the riverfront promenade, and the magnificent Grand Arbour.



CLIENT: BRISBANE CITY COUNCIL
LOCATION: BRISBANE, AUSTRALIA
COMPLETION: 2002
DESIGN TEAM: GILLESPIES | DCM ARCHITECTS

From our early work on the masterplan, the task included developing the overall strategy adopted by the client into new parklands, streetscapes for Grey Street and Little Stanley Street, public urban spaces and the detailed implementation of the 'Grand Arbour' (in association with DCM Architects).

The final development will see the integration of a new urban form into the city framework and the creation of further new popular parkland areas for Brisbane.

Gillespies have also currently developed a maintenance and management strategy for the parklands.



ARMANEE TERRACE, MALAYSIA

阿美尼花园小区 马来西亚

阿美尼花园小区是一商住综合小区，位于马来西亚白沙罗柏兰岭新开发区。

Armanee Terrace is a mixed development principally comprising commercial and residential uses in the newly emerging township of Damansara Perdana.



CLIENT: MK LANDSGROUP
LOCATION: MALAYSIA

Landscaped gardens form the centrepiece of the development and the approach to the landscape design has been one of contemporary Balinese influence. A lake has been created to provide a cooling effect and is overlooked by the development. It is surrounded by lush planting and grassed terraces reminiscent of Balinese rice paddies.

Gillespies prepared the landscape masterplan, design guidelines and subsequent detail design for all external areas.



SYUGA COUNTRY CLUB & TOMIOKA COUNTRY CLUB, JAPAN

与富冈乡村俱乐部 日本

Gillespies在日本设计了多个和高尔夫相关的休闲项目，包括两个乡村俱乐部。

Gillespies has worked on a number of golf related leisure projects in Japan including two Country Clubs.

LOCATION: TOKYO & NAGOYA, JAPAN
DESIGN TEAM: GILLESPIES

The Syuga Country Club is the flagship golf course and country club of one of Japan’s leading specialist companies. The level of investment and high standard of facilities ensured it became a key venue on the Japanese professional golf circuit. The design is characterised by the fusion of the formal Japanese approach to design, with the British naturalistic landscape tradition.

The objective of the design of Tomioka Club was to create a high quality landscape around a prestigious golf course development. Themes of colour and floral display are emphasised within the vicinity of the clubhouse leading to more natural landscape as one moves out onto the course itself. As at Syuga, works by leading western sculptors were incorporated as an integral part of the design.

CHINESE EXPERIENCE

中国项目



Gillespies与JTP赢得了在泸州倒流河公园的国际设计比赛。



The authorities in Luzhou, in the south-western Sichuan province, want to create a place that allows city dwellers to experience the best aspects of rural life within the city boundary. Despite being a short drive from Luzhou Old Town, the site is relatively unspoilt with small-scale farming and rice paddies.

The design centres the focal point for the new community around a farm village with a market hall for farmers to sell their produce and facilities for “agri-tourism” where visitors can learn to grow and pick their own. The masterplan also proposes widening a section of the river to create a lake which could be used for boating, canoeing and sailing. The competition was run by the Luzhou Longma Tan District Government and the judging panel was made up of the Luzhou city mayor and city officers.



ZHONGYU PLAZA, CHONGQING, CHINA

中渝广场，重庆 中国

广场是重庆中心一个重要的新商业区周边的一系列复杂的公共空间，重庆是中国发展最快的城市之一。

A complex series of public spaces around a major new commercial development in the centre of Chongqing, one of China's fastest growing cities.



CLIENT: CHONGQING ZHONGYU
PROPERTY DEVELOPMENT CO. LTD.
LOCATION: CHONGQING, CHINA

The project comprises a major retail development over 3 storeys, a 4 star hotel, two new office blocks and a cinema complex. The diverse nature of the uses on the site and the complicated traffic circulation system has called for a public realm design that has a strong conceptual theme and a unifying character. The design builds upon the idea of a 'confluence', symbolic of the convergence of the two main rivers that flow through Chongqing, the Yangtze and The Jialing. The paving design combines two main colours flowing in from each side of the development and converging to form a unified central place at the heart of the scheme.

The key elements of the public realm include a water jet plaza, an events space, a cinema plaza and a new contemporary frontage to the main arterial road to the front of the development. Roof gardens and terraces also form part of the design and which offer guests at the hotel an elevated rooftop space for outdoor eating and drinking.



GUANGZHOU FINANCIAL CENTRE, CHINA

广州金融中心，广州 中国

Gillespies被KWG邀请为广州金融中心的景观提供设计建议。

Gillespies was invited by KWG to work on a landscape proposal for Guangzhou Financial Centre.



CLIENT: KWG
LOCATION: GUANGZHOU, CHINA

The exciting new mixed-use development is located in Guangzhou, Southern China. The masterplan development consists of high-end residential apartments, offices and a new shopping mall with a series of podium gardens. Gillespies has set out a contemporary vision and concept for the high quality spaces to create a remarkable landmark area for the new financial centre.



CHANGZHI ISLAND MASTERPLAN, CHINA

长治岛总体规划，浙江 中国

长治岛是一个新的定居点，可容纳5万人，以可持续发展的原则设计，打造一个低能耗的生态城镇。

Changzhi Island is a new settlement to accommodate 50,000 people, designed on sustainable principles to create a low-energy, ecological town.



CLIENT: PRIVATE DEVELOPMENT COMPANY
LOCATION: ZHEJIANG PROVINCE, CHINA
COMPLETION: 2010
DESIGN TEAM: GILLESPIES | JTP

Changzhi Island is located south of Zhoushan in the Qiantang River Delta archipelago, close to the regional centres of Ningbo, Hangzhou and Shanghai. The client's intention is to create an ecological town settlement for 50,000 inhabitants, with a wide range of commercial, community and cultural facilities.

Gillespies were further commissioned to prepare an overall strategy for hard and soft landscape for the development according to the regulatory planning masterplan for an area totalling over 300 hectares. The proposals included landscape strategies and typologies for open space, road network, pedestrian circulation, planting, water, bridges, lighting, street furniture, art and structures.

In addition, schematic landscape design was undertaken for key public landscape areas including the Central Business District, Waterfront Park, Community Parks and a Marina.



NEW TOWN WUXI, JIANGSU PROVINCE, CHINA

无锡新城，江苏 中国

Gillespies受邀参与无锡这一新社区的规划扩展项目。

Gillespies were invited to work on proposals for the redevelopment of an expanding community at Wuxi.



CLIENT: PRIVATE DEVELOPMENT
COMPANY
LOCATION: JIANGSU PROVINCE, CHINA
DESIGN TEAM: JTP | GILLESPIES | 9M

The vision was to create a new town offering a varied and rich diversity of mixed use places that combines the best of European and Chinese approach to urban planning. Gillespies role in the project was to work with the lead architects to develop concept designs for a commercial waterfront promenade and all associated public realm adjacent to a new canal running through the heart of the new town. This included a mix of hard and soft landscape spaces including an island garden to act as a green oasis of tranquillity for residents and visitors to the new town.

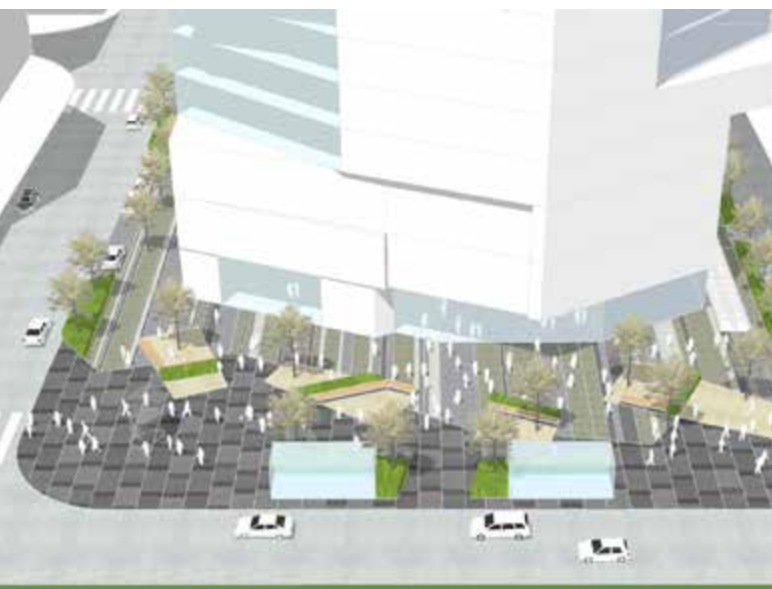


BEIJING SHOPPING MALL, CHINA

北京购物商厦，北京 中国

这是在北京的心脏地带的一个标志性和独特的零售目的地。拥有一系列当代广场，林荫大道和露台，为人们提供愉快和独特的购物体验。

An iconic and unique retail destination in the heart of Beijing. A series of contemporary plazas, boulevards and terraces provide a pleasurable and unique shopping experience.



CLIENT: KWG PROPERTY HOLDINGS LIMITED
LOCATION: BEIJING, CHINA
COMPLETION: 2014

Gillespies was invited to work on proposals for the development of a contemporary landscape scheme.

The exciting new retail development is located at Chongwenmen, Beijing. Responding to architectural proposals, Gillespies creates a high quality public plaza with a series of contemporary landscape terrace areas and roof gardens focused on retail and entertainment.

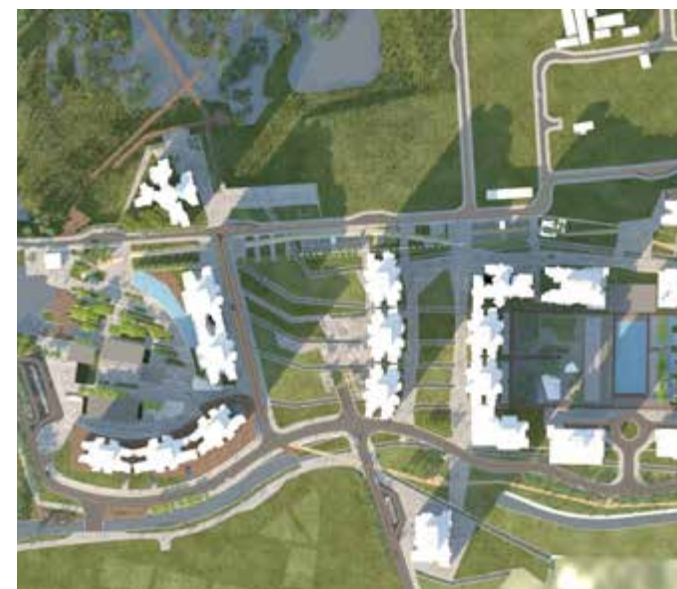


NEW RESIDENTIAL COMMUNITY AND RETAIL, HONG KONG

新住宅与商购社区 香港

Gillespies于2011年受香港知名开发商委托对这一新型的，于购物、娱乐、住宅为一体的大型社区进行景观与社区生态概念设计。该社区位于香港新界。设计理念强调可持续发展性。

Gillespies was commissioned by a major Hong Kong Property Developer to prepare a landscape concept design for a new sustainable residential and retail development in Hong Kong New Territories.



CLIENT: SUN HUNG KAI PROPERTIES LTD
LOCATION: HONG KONG
DESIGN TEAM: GILLESPIES

Gillespies has developed a vibrant, ecologically sensitive landscape scheme that addresses and responds to changing lifestyle choices of people.

This exciting new high rise residential development and retail precinct project has the capacity to set precedent for future eco-lifestyle development within Hong Kong and the wider region. The site architecture creates two main spaces, a public destination space focused on retail experience and the wetland landscape and a high quality Clubhouse space that provides residents with a beautiful garden and pool environment.

The landscape design incorporates a network of linear water channels to articulate the landscape spaces and provide a visible and effective method of water collection, filtration and reuse.



TERMINAL THREE, TAOYUAN AIRPORT, TAIPEI, TAIWAN

台湾桃园机场第三航站楼，台湾

“3号航站楼将为旅客创造全新的旅行体验，并成为所有台湾人民的骄傲” – 桃园国际机场总裁兼首席执行官 David Fei

“[Terminal 3] will create brand new travel experiences for passengers and become the pride of all Taiwanese people” – David Fei, President and CEO of Taoyan International Airport



CLIENT: TAOYUAN AIRPORT
CORPORATION
LOCATION: TAIPEI, TAIWAN
COMPLETION: ONGOING

The design is inspired by Taiwan's beautiful landscapes, the seas surrounding it, its rhythms of nature and life to create a series of unique interior places designed for their purpose and protected beneath an elegant hard shell roof. Within, a soft inner surface is malleable and dynamic to celebrate and form the ever changing spaces below. The nature of the interior spaces whether grand, intimate, uniform or dramatic and the extent of those spaces too can be changed. This adjustable scaling will give passengers spatial clarity in all areas; large, small, busy or quiet, to reduce stress and improve wellbeing and comfort. This flexibility ensures the airport is always at its best and suitably presented as the principal gateway to and from Taiwan to the rest of the world.



GUOTAI PLAZA, CHONGQING, CHINA

国泰广场，重庆 中国

Gillespies受委托Pergrum地产于2010年设计重庆市的中心商务区。提供概念设计以及相应的未来发展建议,项目要求有足够的细节以取得为这一新的公共空间的规划许可。

Gillespies were appointed by Pengrun Developments in 2010 to undertake a prestigious design project in the heart of Chongqing city's Central Business District. The commission was to prepare concepts and subsequently develop proposals in sufficient detail to obtain Planning Permission from the Government for a large new public space.



CLIENT: PENGRUN DEVELOPMENTS
LOCATION: CHONGQING, CHINA
DESIGN TEAM: GILLESPIES | JERDE
PARTNERSHIP

The project is an extraordinary multi-level structure with up to five levels of retail over four levels of carparking. Remarkably, this accommodation will be partially underground so that the roof of the building becomes a new public square rising from street level on Zhouong Road up to a contemporary arts terrace in front of the iconic new red City Arts building which opened in 2012.

Gillespies worked collaboratively with US retail architects, Jerde, to develop workable solutions to a highly technical commission. The design creates a series of public realm spaces on rising terraces, starting with a Civic Square before leading onto a densely tree planted urban forest with water fountains and steam jets before emerging out to a generous arts terrace overlooking a historic quarter, where Gillespies design had to incorporate the setting of a historic building into a retailing environment.

Work on the lower levels of structure was commenced on site in 2011 and Gillespies proposals were submitted to the Government for approval in September 2011.



CALIFORNIA PLACE, SHANGHAI, CHINA

加州购物城 上海

Gillespies于2012年受KWG地产委托进行上海一个新临售项目的景观设计。

Gillespies was commissioned in autumn 2012 by KWG Property Holdings Limited to undertake full landscape design services for a new retail development in Shanghai.

Gillespies的概念设计集中考虑项目的现代感，同时着重细节的表现，用以吻合Benoy设计的建筑风格，为广大使用者带来全新的购物与娱乐的空间体验。这一激动人心的新型购物娱乐城及其湖滨景观将能承载时间的磨练，成为上海及周边地区高质量发展的标志。场地以及建筑本身即创造了多层次的丰富的室外空间，其中包括一个集临售与娱乐为主的中央庭院，天台餐饮空间和一个自然的湖滨绿地为人们提供休闲和社交等活动。

This exciting new residential and leisure development and lake-edge landscape has the capacity to set a precedent for future high quality development around Shanghai and the wider region.



CLIENT: KWG PROPERTY HOLDINGS LIMITED
LOCATION: SHANGHAI, CHINA

Gillespies' concept design work focuses on the development of a contemporary, richly detailed landscape scheme that responds to Benoy's architectural proposals and helps to create a lifestyle retail and entertainment destination for a wide range of people.

This exciting new retail development and lake-edge landscape has the capacity to set a precedent for future high quality development around Shanghai and the wider region.

The site architecture creates a range of outdoor spaces across multiple levels, with central courtyards focused on retail and entertainment, perimeter landscaped terrace areas for outdoor dining and an informal lake edge parkland for informal relaxation and social activity.



SUZHOU WEST DISTRICT ECO-TOWN, CHINA

苏州生态镇，江苏 中国

设计整合一体化的生态系统，苏州生态镇的总体规划受益于田园都市主义及传统中国在生物气象学上的共识。

The first phase of a new eco-town in Suzhou, a city located west of Shanghai in the south-east of Jiangsu Province, eastern China. The 6 sq km site is predominantly agricultural and is located close to the shores of Tai Lake; the third largest lake in China.



CLIENT: SUZHOU WEST DISTRICT ECO-TOWN DEVELOPMENT DEPARTMENT
LOCATION: JIANGSU PROVINCE, CHINA
COMPLETED: 2012
DESIGN TEAM: JTP | GILLESPIES | SKM
COLIN BUCHANAN | JOACHIM EBLE
ARCHITEKTUR

Gillespies acted as landscape architects and environmental planners in the winning design team led by John Thompson & Partners (JTP) for an international competition to design the first phase of the new Suzhou Eco Town.

The competition aimed to reconcile financial viability with long term sustainability. Suzhou is a city located 100km west of Shanghai in the south-east of Jiangsu Province, eastern China. The site extends to 6 square kilometre and is located next to Tai Lake, the third largest in China. The clients aspirations were to develop a new town that promotes a relaxed lifestyle based on slow movement, leisure and recreation, and on the rich natural and ecological resources.

Working in collaboration with the team, Gillespies were responsible for the green space strategy, water strategy and more detailed landscape studies for a new central lake area, the ecology of the Tai Lake margins and the conservation of existing hills and forests.

OUR TEAM 我们的团对

我们不仅在设计构思也在项目管理上取得了高品质。我们的高级景观设计师团队熟练地确保客户在整个项目过程中通过讨论会和报告等途径得到充分的项目信息，以确保在所有层面进行有效的沟通，并且概念的表达和实施符合项目的计划表和项目目标。

提交成果

我们的规划和设计方法是基于对设计项目的复杂性的理解和认知。我们一直能够在具有挑战性的时间表范围内和预算内成功完成复杂的项目。从项目启动，规划到设计到实施我们已经完成过众多贯穿设计每个阶段的项目。

Gillespies在英国的五个办事处和国际上拥有超过100名技术人员和14名支持人员。我们的团队由合伙人领导 - 他们是领域公认的专家，许多是知名的行业人士。他们为独立设计审查提供建议，参与政府政策和教学研讨会。合伙人由拥有丰富的管理经验，行业知识和技术能力的总监团队支持。我们的总监都已成功地在一系列行业中设计并实施了一系列复杂的计划和规划。每个项目都会有一个完整的技术团对负责，在需要更大的资源需求时我们会加强核心团队。

我们的所有员工都在他们的相关学科 - 景观建筑，城市设计，规划和建筑拥有专业资格，并为每个设计项目带来高水平的承诺，创造力和热情。我们相信我们公司的大小可以提供整体和灵活的设计方法，同时可以提供全面的技能，使我们能够为最复杂和具有挑战性的设计和规划项目提供我们的专业服务。

协作设计

设计团队和外界利益相关者的早期参与对于从项目开始就建立相关方之间的伙伴关系至关重要。我们的团队拥有建立和领导设计团队的经验，而且还担任多学科设计团队的辅助顾问。我们了解合作的重要性 - 以确保技能和知识可以汇集，以使项目更成功，并达到客户的目标。除了与客户密切合作，我们还经常与建筑师，项目经理，经济学家，工程师，成本专家，艺术家和公众合作。

We pride ourselves on achieving a high degree of quality not only in generating design ideas but also managing projects. Our senior team are skilled in ensuring that the client is fully informed throughout the process through workshops and briefings to ensure that there is effective communication at all levels and that the concepts generated are expressed and delivered in a means and to a programme that meets the project objectives.

PROVEN DELIVERY

Our approach to planning and design is based upon an understanding and a recognition of the complex nature of design projects. We have consistently demonstrated our ability to successfully deliver complex projects under challenging timescales on time and to budget. We have undertaken the delivery of projects through every stage of the design process from inception and planning through to design and implementation.

Gillespies has a workforce of over 100 technical staff and 14 support staff that work across five UK offices, but also internationally. Our teams are led by the practice partners—recognised experts in their fields and many are prominent industry figures who advise is sought for independent design reviews, government policy and teaching seminars. The partners are supported by a team of Associates who extensive management experience, industry knowledge, technical ability, and have successfully delivered a number of complex schemes across a range of sectors. A team of technical staff is allocated to each projects, reinforcing the core teams when there is a requirement for a greater demand of resource.

All our staff are professionally qualified within their relevant discipline —landscape architecture, urban design, planning and architecture —and bring a high level of commitment, creativity and enthusiasm to every design project. We believe our practice is small enough to offer a holistic and flexible approach to design, while large enough to provide a comprehensive range of skills enabling us to deliver some of the most complex and challenging schemes available to our profession.

COLLABORATIVE DESIGNING

Early engagement of design teams and external stakeholders is vital in establishing from the outset a process of partnership between relevant parties. Our teams have experience of establishing and leading design teams, but also acting as sub-consultants in multidisciplinary design teams. We understand the importance of collaboration to ensure skills and knowledge can be pooled in order to make the project more successful and meet the clients’ objectives. As well as working closely with clients, we also work frequently with architects, project managers, economists, engineers, cost specialists, artists and the general public.



GILLESPIES ORGANOGRAM 公司结构

PARTNERS 合伙人			
Peter Evans CHAIRMAN Tom Walker LA/UD	Stephen Wardell MANAGING PARTNER Stephen Richards LA	Jim Diggle LA Mike Sharp A	Jim Gibson LA Steve Nelson LA
ASSOCIATE PARTNERS 总监合伙人			
Warren Chapman LA Adam Greatrix LA/A	Jacque Critchley EA/P Eugeina Grilli LA	Jim Fox UD/P Sarah Marchant LA	Sarah Gibson UD/LA Armel Mourgue LA
SENIOR ASSOCIATES 高级总监			
William Basterfield LA	Sheena Bell LA	Graeme Pert A	Oliver Smith LA
ASSOCIATES 总监			
Tim Buykx LA Suzane Irwine LA Kyle Morrison LA	Helen Johnson LA John Maccleary LA Gorana Shepherd A/UD	Michael De Wet LA Neil Matthew LA Phillip Smith LA	Karen Pinckney LA Justin Morey LA Paul Winton LA
SENIORS 高级设计师			
Antonia Boyle LA Oliver Clarke LA Luke Flanagan LA Nick Green LA Laura Mackie LA Ceara Pimley LA Karolina Skonieczna LA Nicola Whiting LA	Alexander Carlile LA Robert Copeland PLA Jon Freeman LA Katie Hammond LA Jonathon Marshall LA Stuart Postlethwaite LA Leo Song LA Sissy Xiang LA	Elaine Chen-Smith UD David Cunningham LA Jean Graham PLA Mayda Henderson PC Ranjit Matharu LA Andrew Rose LA Darrell Stebbings LA	Lucy Chermaz UD Oliver Duguid LA Rebecca Greatrix LA Sam Hutchison LA Matthew Pepper LA Melanie Schwartz LA Wendelin Thoele LA
KEY			

A	Architect	C	Chairman	FM	Finance Manager	IT	Information Technology
AS	Admin Secretary	EA	Environmental Assessor	GD	Graphic Designer	LA	Landscape Architect
BT	BIM Technologist / Revit	F(D)	Finance (Director)	HRP	Human Resources Payroll	LM	Landscape Manager

LANDSCAPE ARCHITECTS/URBAN DESIGNERS 景观设计师/城市设计师					
Melissa Alagna <small>LA</small>	Caterina Avitabile <small>UD</small>	Max Barnes <small>LA</small>	Ed Barwell <small>LA</small>	Alison Baxter <small>LA</small>	Omri Ben Cherit <small>LA</small>
Ambre Bodard <small>LA</small>	Sarah Bridger <small>LA</small>	Conrad Clayden <small>LA</small>	Mathew Cockburn <small>A</small>	Sandra Cook <small>LA</small>	Stuart Davies <small>LA</small>
Sybille De Cussy <small>LA</small>	Christos Diplas <small>LA</small>	Zac Ford <small>LA</small>	Kathryn Green <small>LA</small>	Mike Green <small>LA</small>	Eleanor Godfrey <small>LA</small>
Giacomo Guzzon <small>LA</small>	Mark Hallett <small>LA</small>	Sam Hamilton <small>LA</small>	Ciara Hanson <small>LA</small>	Cameron Heeley <small>LA</small>	Yeuchen Hu <small>LA</small>
Tunde Jager <small>LA</small>	Georgia Jezeph <small>LA</small>	Ranran Ju <small>LA</small>	Matevz Kopitar <small>LA</small>	Guillaume Laborde <small>LA</small>	Dimitrious Lantzas <small>LA</small>
Karen Lees <small>LA</small>	Chiara Lorenzi <small>LA</small>	Jaime Macfarlane <small>LA</small>	Richard MacIntyre <small>LA</small>	Karolina Malecha <small>LA</small>	Rob Mayers <small>LA/LVIA</small>
Kaori Miyahara <small>LA</small>	Mark Moss <small>LA</small>	Ana Neto <small>LA</small>	Ivelina Obretenova <small>BT</small>	Ana Peixoto <small>LA</small>	Anna Rhodes <small>LA</small>
Jim Riley <small>LA</small>	Lindsay Robinson <small>LA</small>	Valmore Rojas <small>LA</small>	Rebekah Russell <small>UD</small>	Khyati Saraf <small>LA</small>	Connie Shiel <small>BT</small>
Helene Saulue-Laborde <small>LA</small>	Heather Simeonov <small>LA</small>	Chris Smart <small>LA</small>	Katarzyna Szczyrba <small>LA</small>	Alex Tang <small>BT</small>	Sandro Truchan <small>A</small>
Eszter Varga <small>LA</small>	Roger Williams <small>LA</small>	Tianyu Zhang <small>LA</small>			
FINANCE 财会					
Tim Postlethwaite <small>FD</small>	Lois Skinner <small>FM</small>	Sue Wilson <small>SAS/HRP</small>	Lesley Wade <small>F</small>		
Melissa Gray <small>F</small>					
MARKETING 市场			IT		
Karina Blakey <small>MM</small>		Simon Bullock <small>IT</small>			
GRAPHIC DESIGN 平面设计					
Hilary Barber <small>GD/LA</small>	Rob Hazeldine <small>GD</small>	Sarah Mattok <small>GD</small>	Richard McDonald <small>GD</small>		
SUPPORT STAFF 技术支持人员					
Loretta Malin <small>SAS</small>	Trish Lynch <small>SAS</small>	Hannah Butler <small>AS</small>	Sara Edwards <small>AS</small>		

LVIA	Landscape Visual Impact Assessment	PC	Principal Consultant	SAS	Senior Admin Secretary
MM	Marketing Manager	PL	Planner	UD	Urban Designer
		PLA	Principal Landscape Architect		

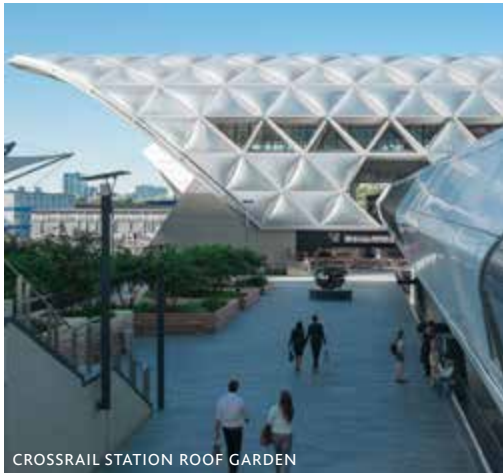
SHOWCASE PROJECTS 项目展示



NEO BANKSIDE, LONDON, UK



ST ANDREW SQUARE, EDINBURGH



CROSSRAIL STATION ROOF GARDEN



MASDAR CITY, ABU DHABI, UAE



THE SKY GARDEN, LONDON, UK



RIVERLIGHT, LONDON, UK



MEDIACITYUK, SALFORD, UK



NATIONAL PARK PROTECTED LANDSCAPES



ST GILES CIRCUS, LONDON, UK



BRADFORD CITY PARK, BRADFORD, UK



NUMBER ONE RIVERSIDE, ROCHDALE, UK



EBBFLEET MASTERPLAN, KENT, UK



BUCHANAN STREET, GLASGOW



ELEPHANT PARK, LONDON, UK



LEICESTER CATHEDRAL GARDENS, UK

GILLESPIES

GILLESPIES

1 ST JOHN'S SQUARE,
LONDON,
EC1M 4DH
UNITED KINGDOM

T: +44 (0)20 7253 2929
E: DESIGN.LONDON@GILLESPIES.CO.UK
W: WWW.GILLESPIES.CO.UK

LONDON | OXFORD | MANCHESTER | LEEDS | GLASGOW | ABU DHABI